

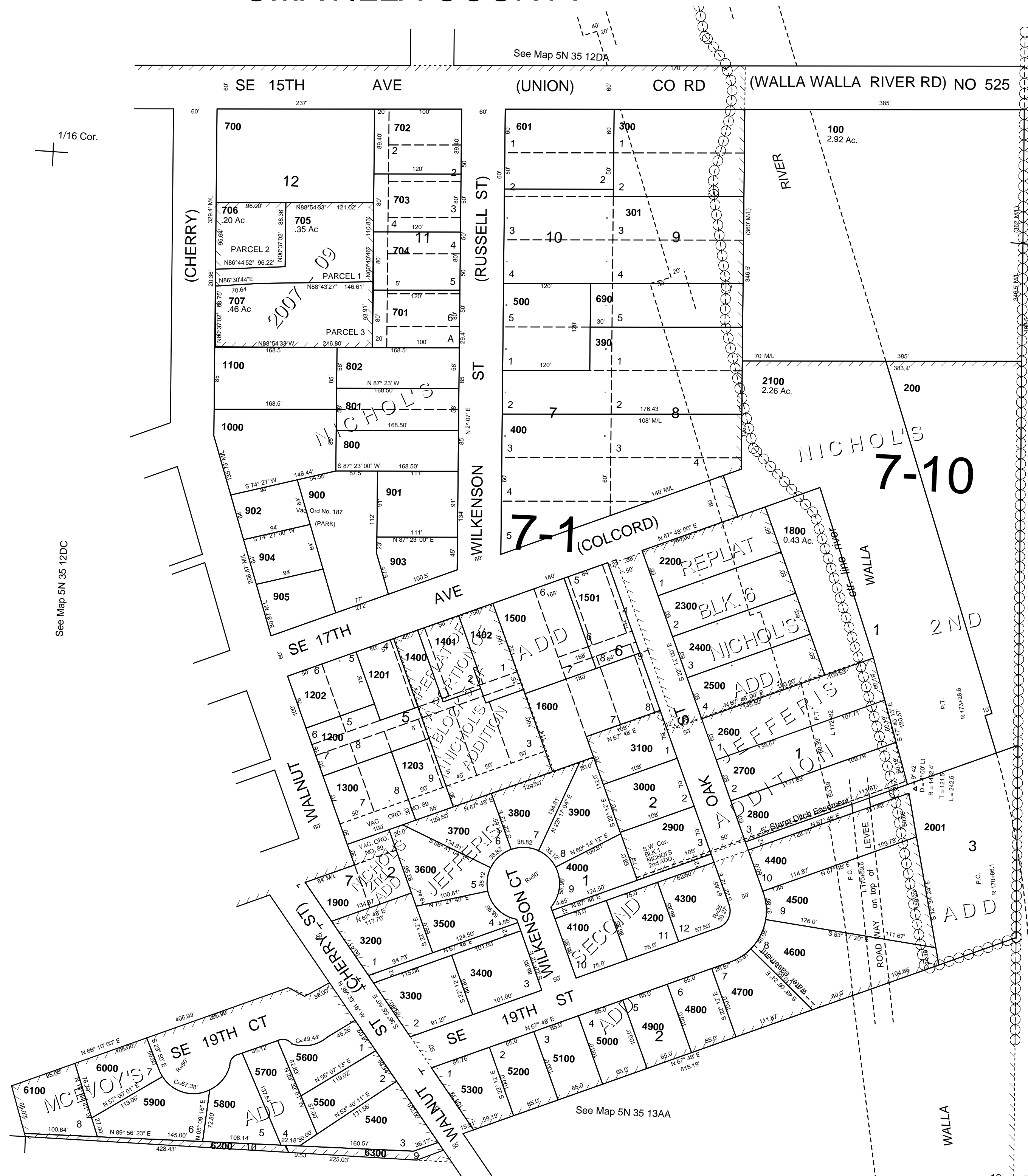
This map was prepared for Assessment & Taxation purposes only and was NOT prepared nor is it suitable for legal, engineering or surveying purposes.

SE1/4 SE1/4 SEC 12 T5N R35E WM UMATILLA COUNTY

1"=100'

5N 35 12DD

AERIAL PHOTO NO 11P-82



1/16 Cor.

See Map 5N 35 12DC

See Map 5N 35 12DA

1/16 Cor.

- CANCELLED
- TL 1700
- 1801
- 1801
- 1903
- 1904
- 1901
- 1902
- 2000
- 2002
- 2003
- 500

See Map 5N 36

See Map 5N 35 13AA

Revised: 1/07/16

5N 35 12DD