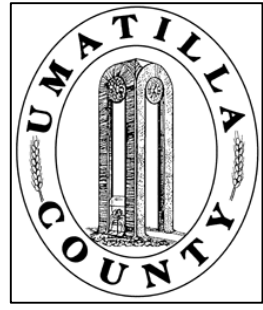


This map was prepared for Assessment & Taxation purposes only and was NOT prepared nor is it suitable for legal, engineering or surveying purposes.

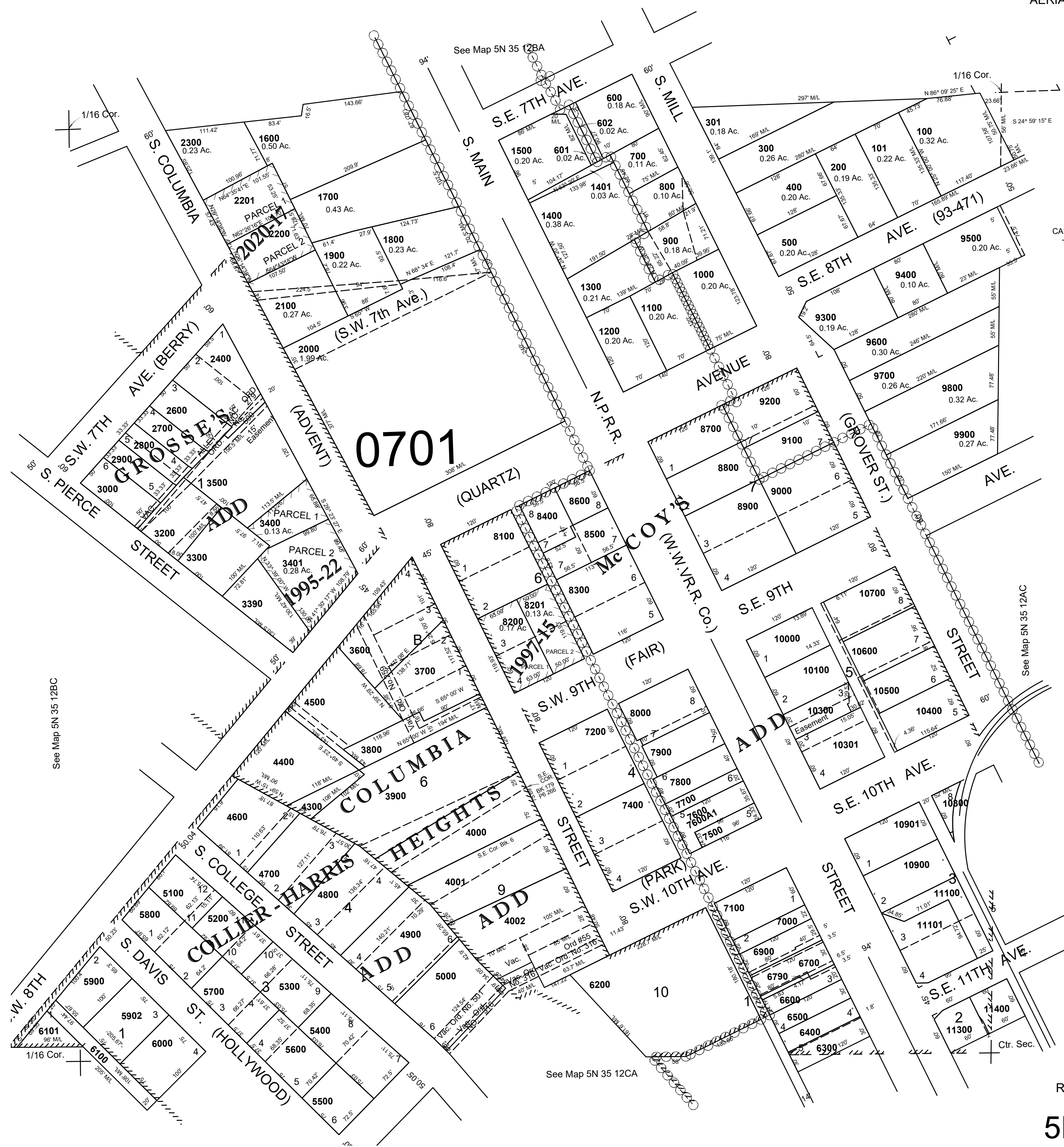
SE1/4 NW1/4 SEC 12 T 5N R 35 E WM UMATILLA COUNTY

5N3512BD

AERIAL PHOTO NO. 11P-82



SCALE: 1" = 100'



- CANCELLED
- TL 2500
 - 3100
 - 4290
 - 6800
 - 7300
 - 9501
 - 10001
 - 10101
 - 10200
 - 10302
 - 10303
 - 10401
 - 10501
 - 10601
 - 10602
 - 10701
 - 11200
 - 11401
 - 3901
 - 3902
 - 1301
 - 5901
 - 11102
 - 11301
 - 11000
 - 9101
 - 8401
 - 4100
 - 4200

REVISED: 09-09-2021

5N3512BD