

This map was prepared for Assessment & Taxation purposes only and was NOT prepared nor is it suitable for legal, engineering or surveying purposes.

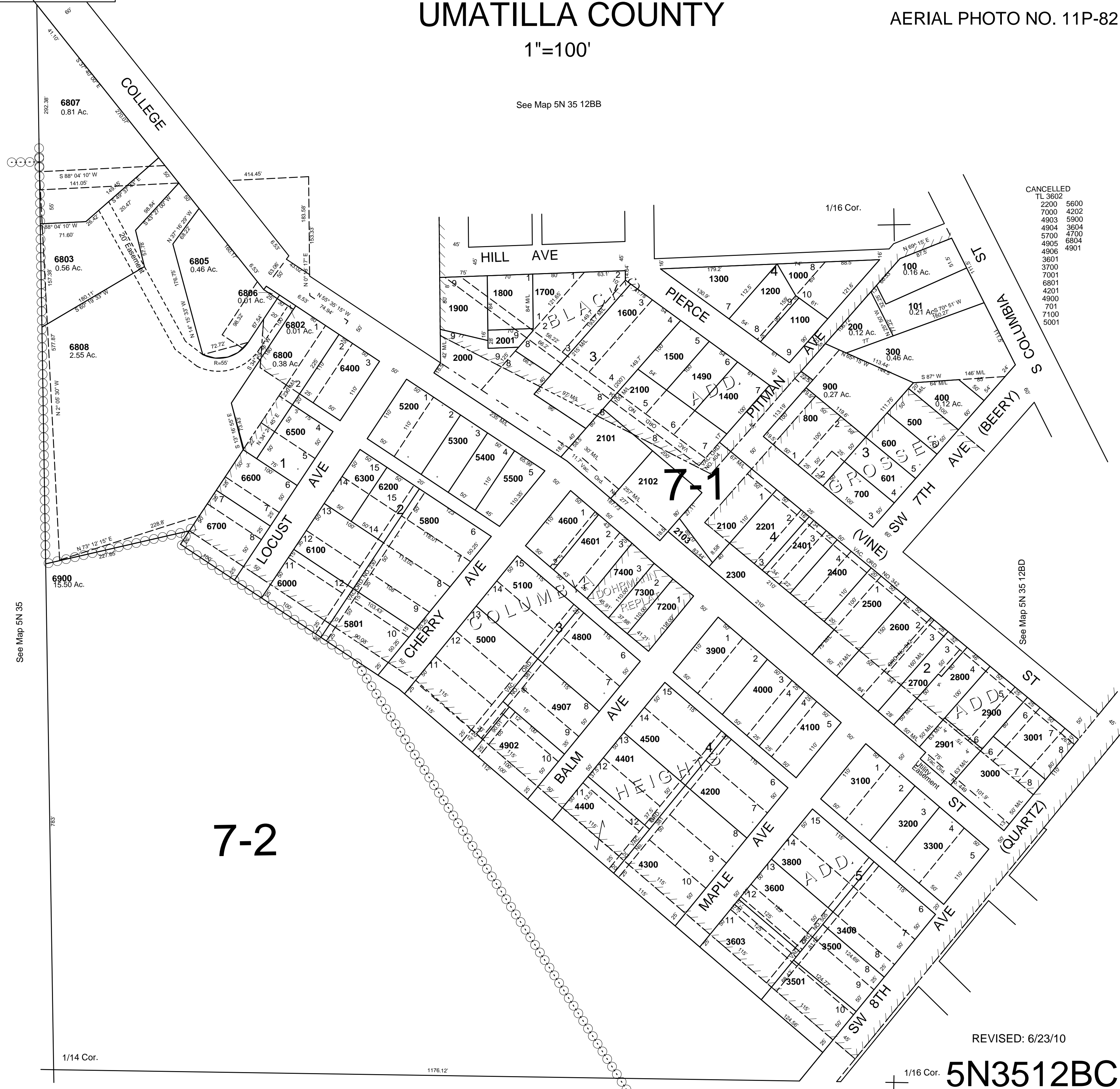
# SW1/4 NW1/4 SEC 12 T5N R35E WM UMATILLA COUNTY

**5N3512BC**  
AERIAL PHOTO NO. 11P-82

1"=100'

See Map 5N 35 12BB

CANCELLED  
TL 3602  
2200 5600  
7000 4202  
4903 5900  
4904 3604  
5700 4700  
4905 6804  
4906 6804  
3601 4901  
3700 7001  
6801 4201  
4900 7010  
7100 5001



See Map 5N 35

See Map 5N 35 12BD

1/14 Cor.

1176.12'

See Map 5N 35 12

REVISED: 6/23/10

1/16 Cor.

**5N3512BC**