

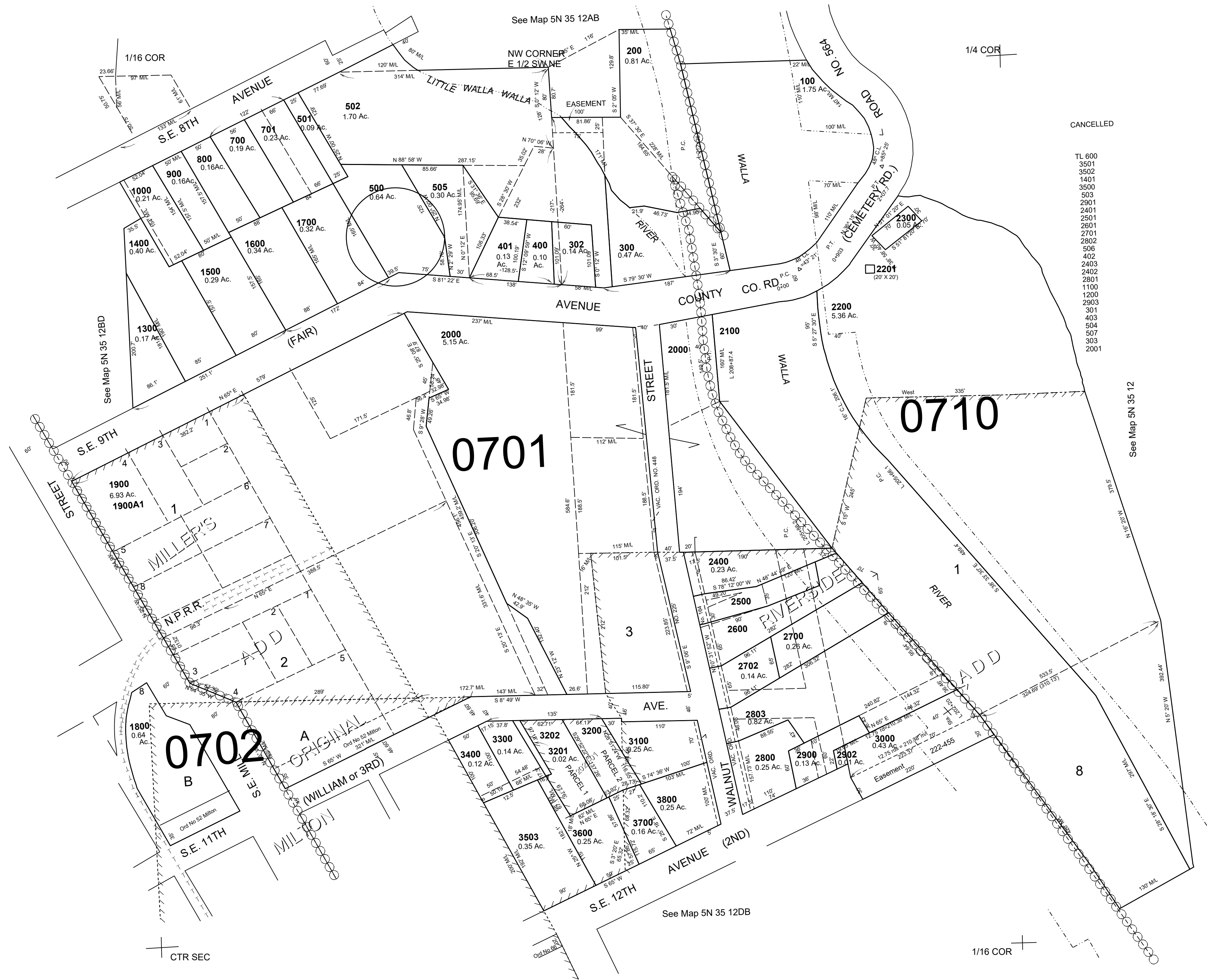
This map was prepared for Assessment & Taxation purposes only and was NOT prepared nor is it suitable for legal, engineering or surveying purposes.

SW 1/4 NE 1/4 SEC 12 T5N R35E WM UMATILLA COUNTY

SCALE 1"=100'

5N 35 12AC

AERIAL PHOTO NO. 11P-82



CANCELLED

- TL 600
- 3501
- 3502
- 1401
- 3500
- 503
- 2901
- 2401
- 2501
- 2601
- 2701
- 2802
- 506
- 402
- 2403
- 2402
- 2801
- 1100
- 1200
- 2903
- 301
- 403
- 504
- 507
- 303
- 2001

Revised: 01-08-20
5N 35 12AC