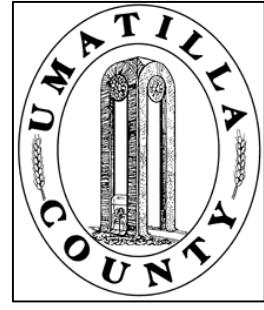


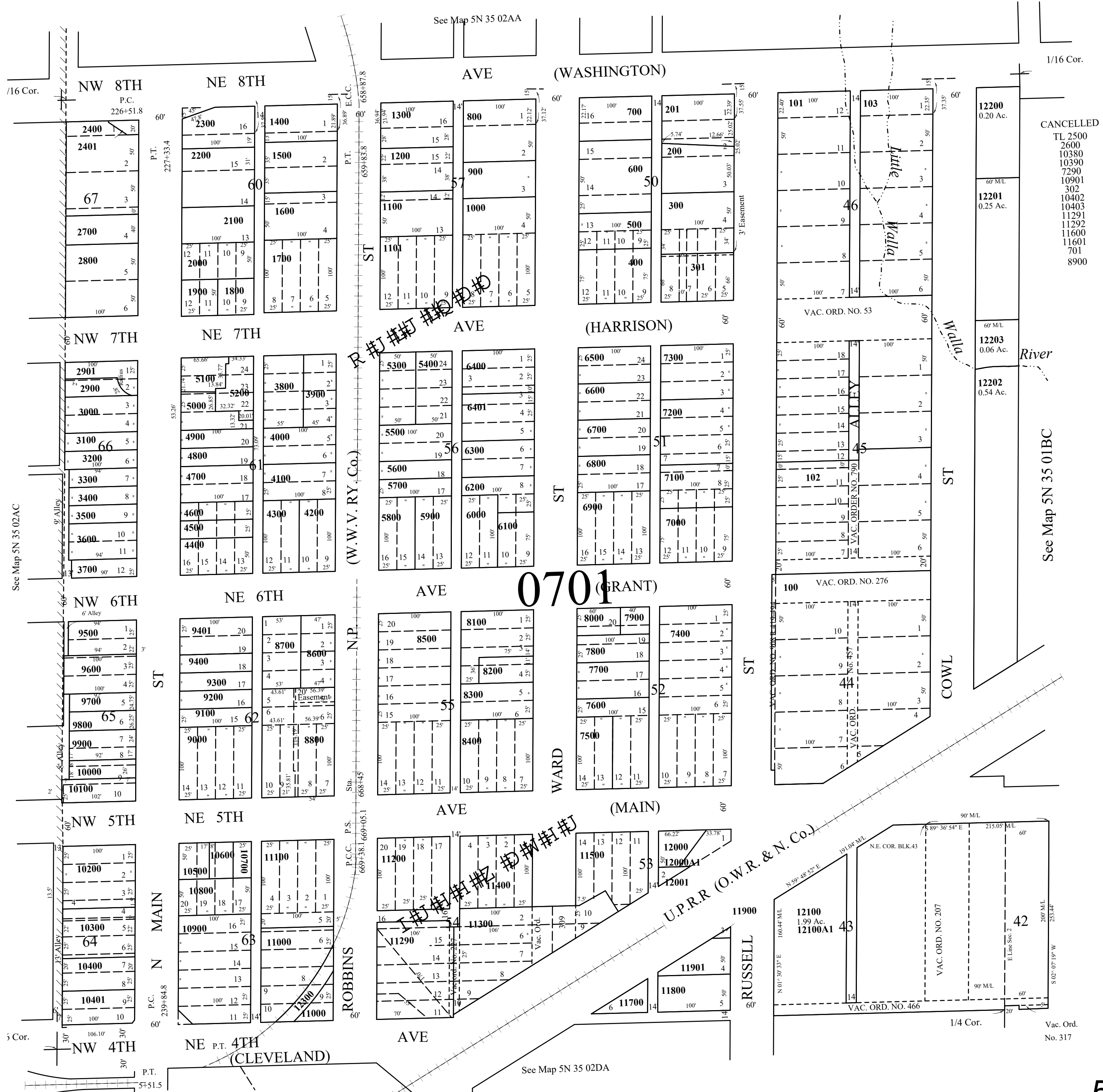
This map was prepared for Assessment & Taxation purposes only and was NOT prepared nor is it suitable for legal, engineering or surveying purposes.



SE1/4 NE1/4 SEC 2 T5N R35E WM UMATILLA COUNTY

5N3502AD

SCALE: 1" = 100'



- CANCELLED
- TL 2500
 - 2600
 - 10380
 - 10390
 - 7290
 - 10901
 - 302
 - 10402
 - 10403
 - 11291
 - 11292
 - 11600
 - 11601
 - 701
 - 8900

REVISED: 09-09-2021

5N3502AD