

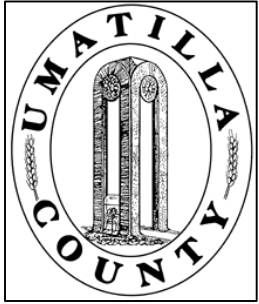
This map was prepared for Assessment & Taxation purposes only and was NOT prepared nor is it suitable for legal, engineering or surveying purposes.

NW 1/4 SE 1/4 SEC 32 T 5N R 29 E WM UMATILLA COUNTY, OR

Revised: 2/13/09

5N2932DB

SCALE: 1" = 100' AERIAL PHOTO NO. NZ-IP-99



tr. Sec
Hermiston Highway
Columbia R.
No. 333

NO. 1257

(NO. 699)

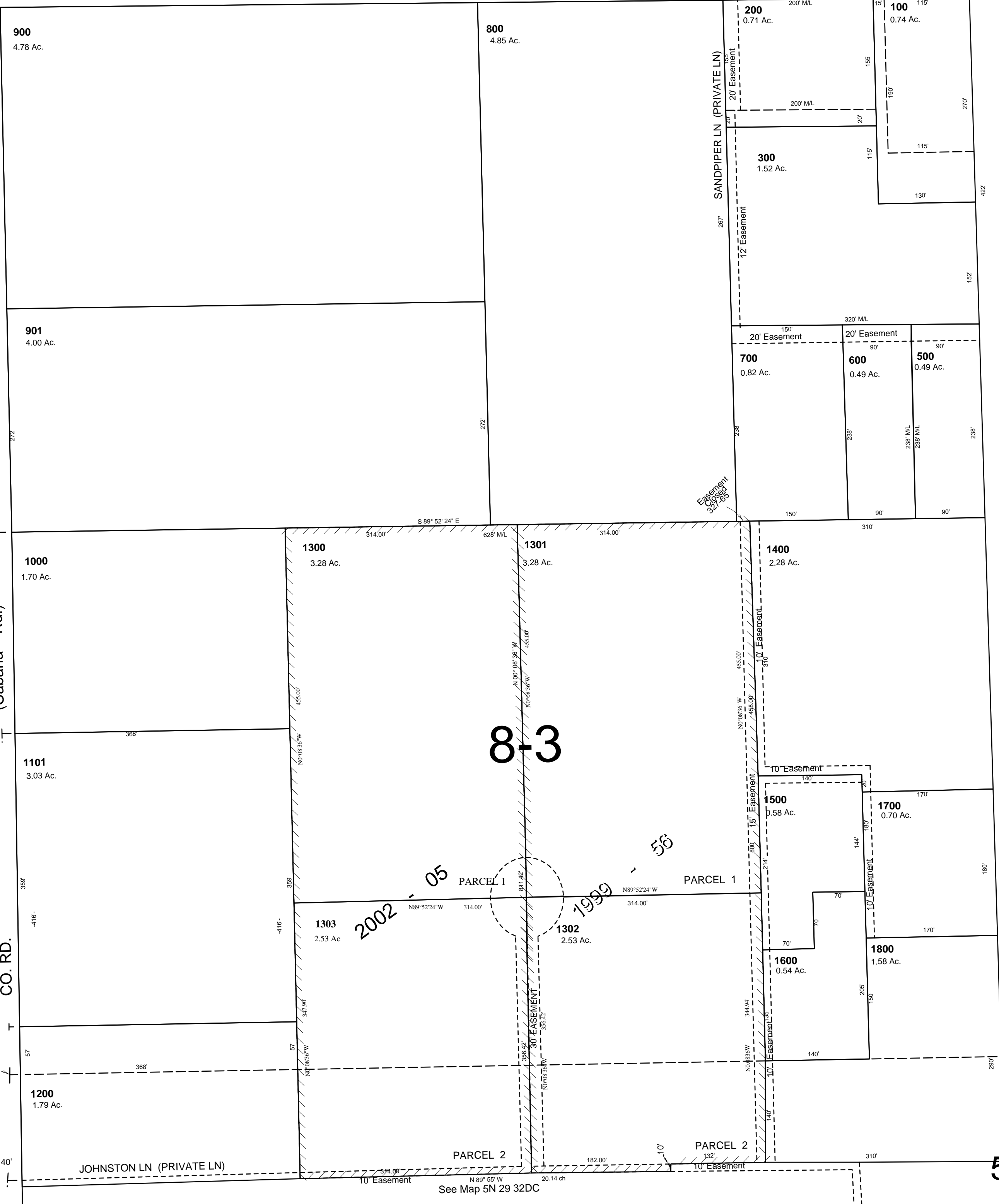
See Map 5N 29 32CA

(Cabana Rd.)

CO. RD.

1/16 Cor.

40'



CANCELLED
TL 400
401
1100
301

See Map 5N 29 32

1/16 Cor.

5N2932DB

See Map 5N 29 32
N 89° 50' W 20.14 ch

1/16 Cor.

See Map 5N 29 32DC
N 89° 55' W 20.14 ch