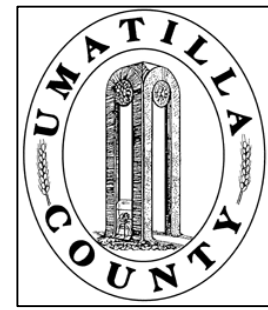


This map was prepared for Assessment & Taxation purposes only and was NOT prepared nor is it suitable for legal, engineering or surveying purposes.



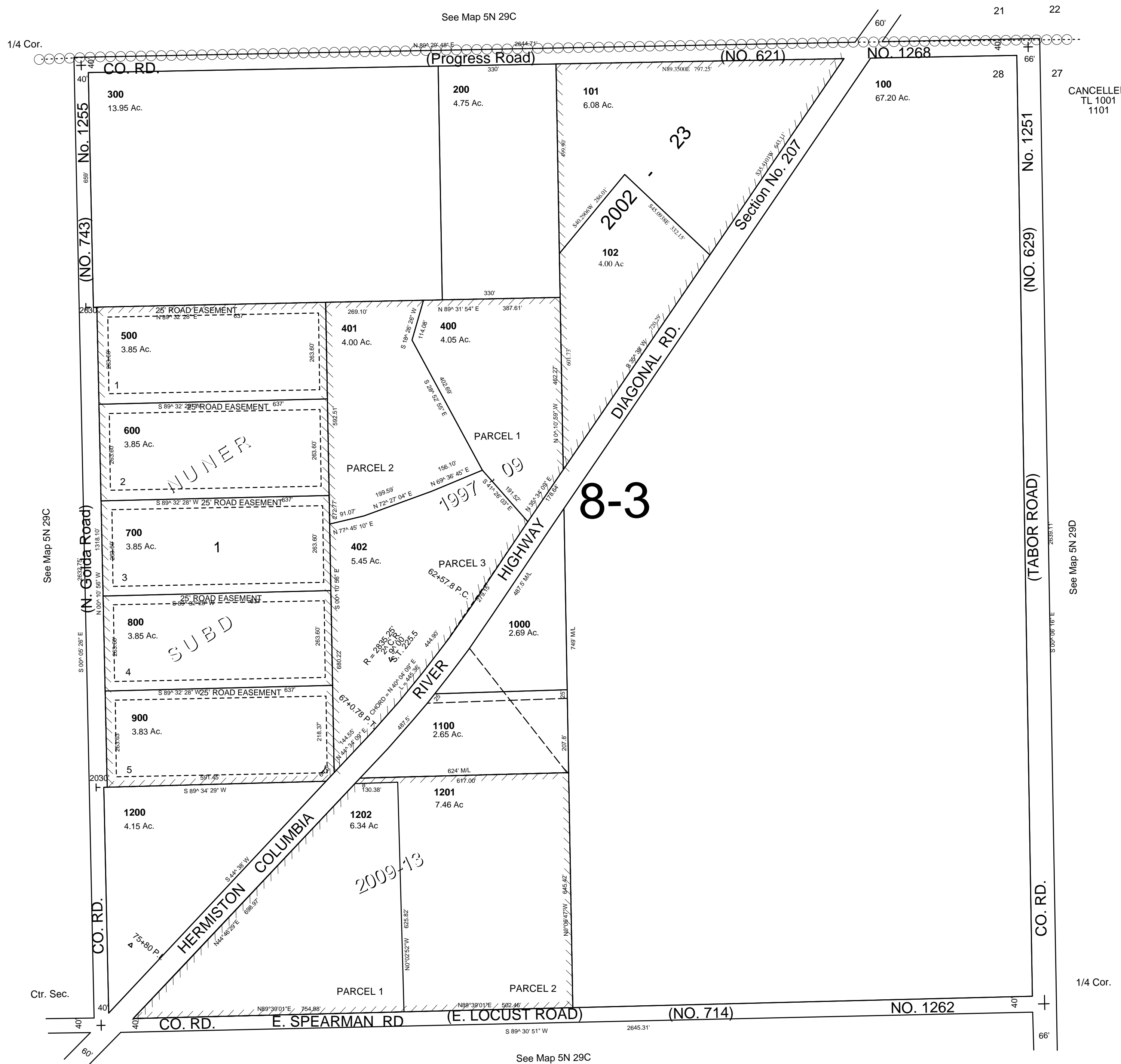
NE 1/4 SEC 28 T 5N R 29 E WM

UMATILLA COUNTY, OR

5N 29 28A

AERIAL PHOTO NO. IP - 99

SCALE: 1" = 200'



CANCELLED TL 1001 1101

See Map 5N 29D

REVISED: 3/18/10
5N 29 28A