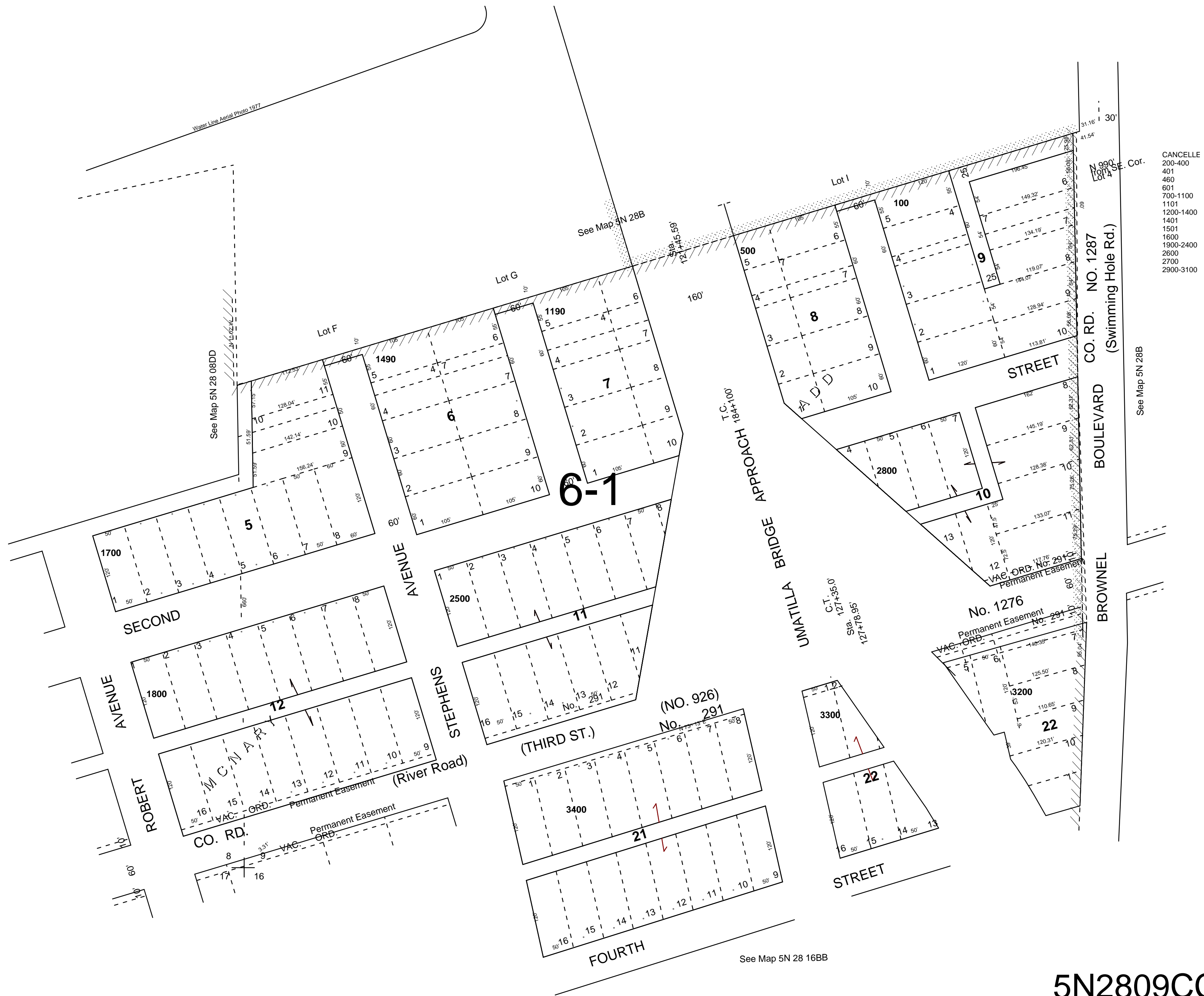


This map was prepared for assessment purposes

SW1/4 SW1/4SEC 9 T5NR28E WM  
UMATILLA COUNTY

5N2809CC

SCALE 1"=100'



- CANCELLED
- 200-400
- 401
- 460
- 601
- 700-1100
- 1101
- 1200-1400
- 1401
- 1501
- 1600
- 1900-2400
- 2600
- 2700
- 2900-3100

5N2809CC