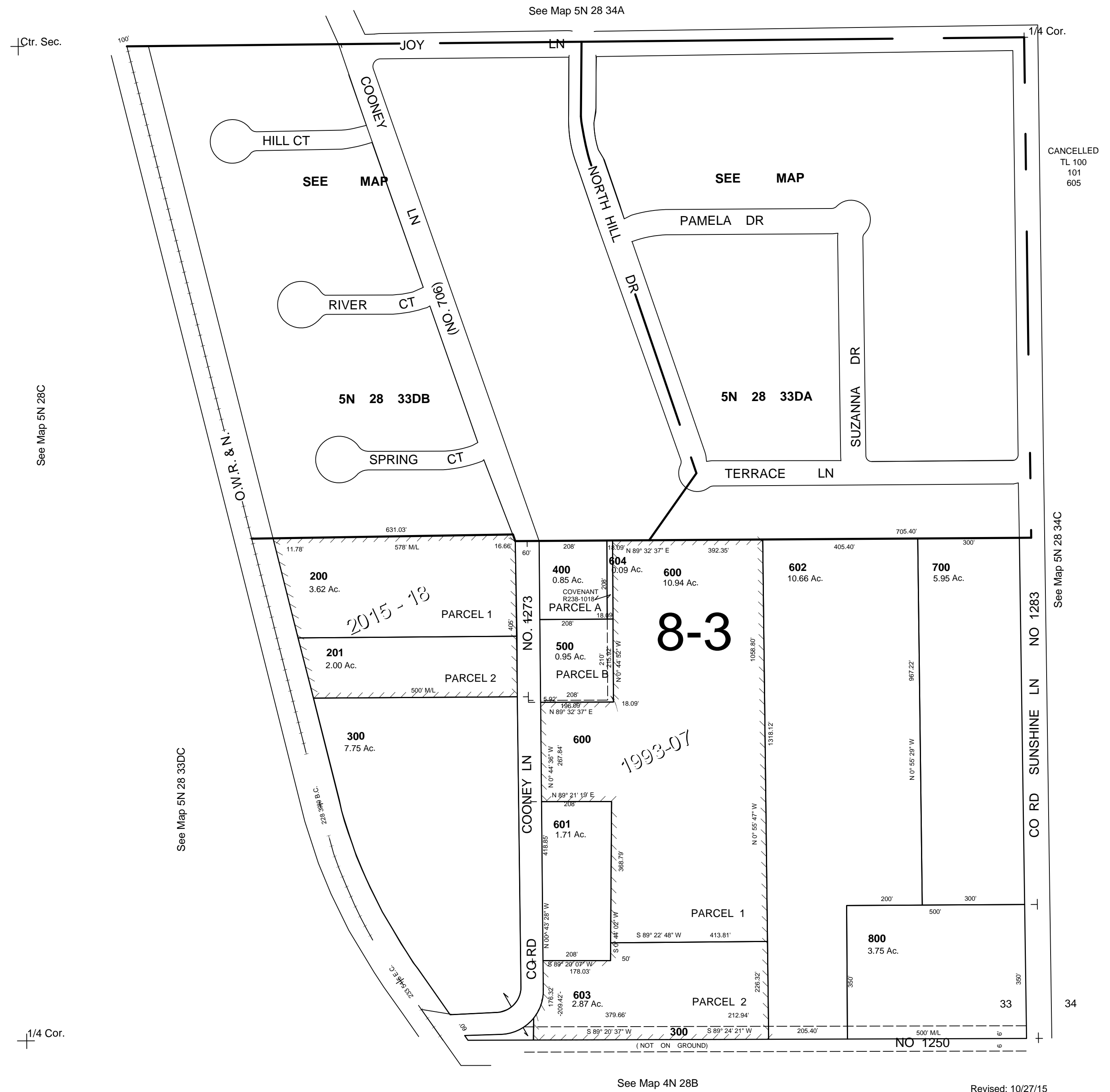


This map was prepared for Assessment & Taxation purposes only and was NOT prepared nor is it suitable for legal, engineering or surveying purposes.

SE1/4 SEC 33 T5N R28E WM  
UMATILLA COUNTY  
SCALE 1"=200'

5N 28 33D

AERIAL PHOTO NO. 1P-105



See Map 4N 28B

Revised: 10/27/15

5N 28 33D