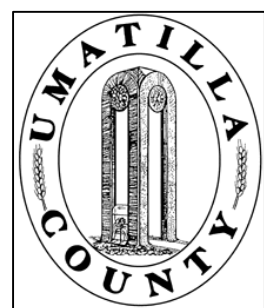


This map was prepared for Assessment & Taxation purposes only and was NOT prepared nor is it suitable for legal, engineering or surveying purposes.

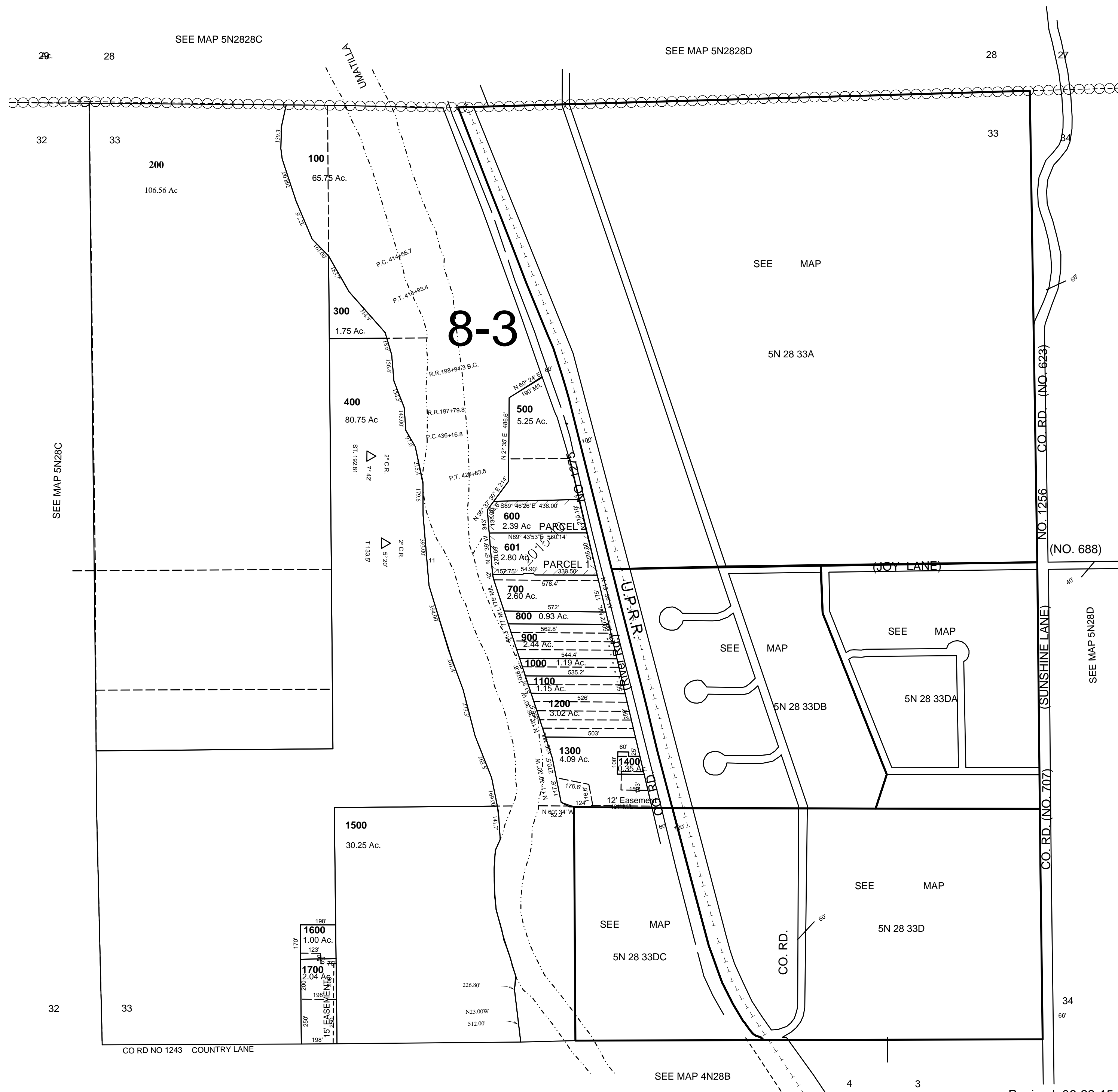


SEC 33 T5 N R 28 E WM UMATILLA COUNTY

SCALE: 1" = 400'

5N2833

AERIAL PHOTO NO 1P 105



Revised: 06-22-15

5N2833