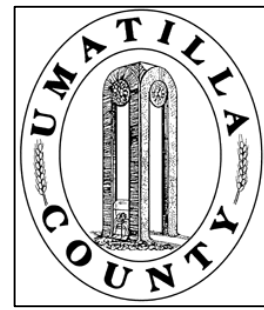


This map was prepared for Assessment & Taxation purposes only and was NOT prepared nor is it suitable for legal, engineering or surveying purposes.

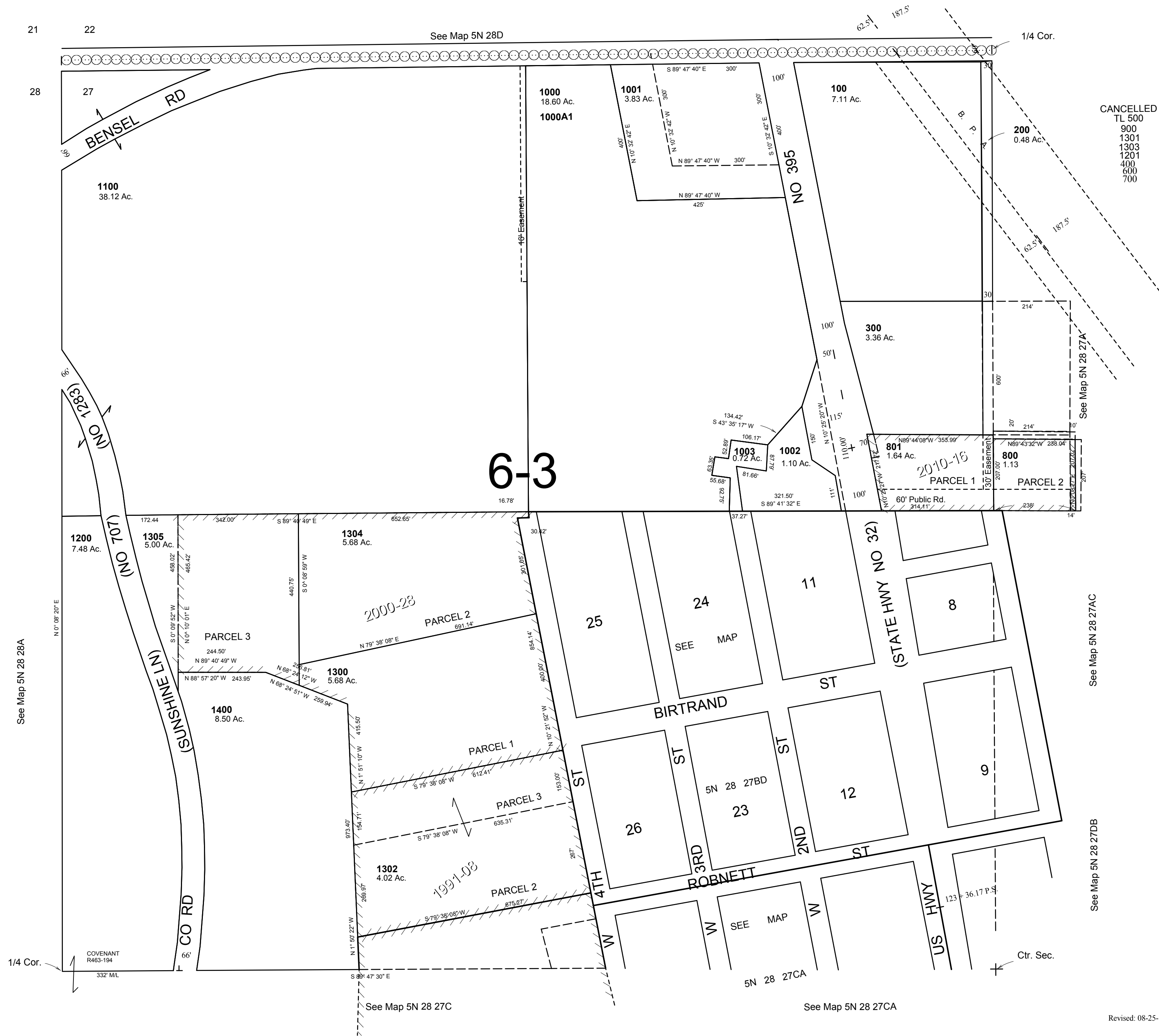


NW 1/4 SEC 27 T5N R28E WM UMATILLA COUNTY

5N2827B

SCALE: 1" = 200

Aerial Photo No. 1P-104



CANCELLED
TL 500
900
1301
1303
1201
400
600
700

Revised: 08-25-17

5N2827B