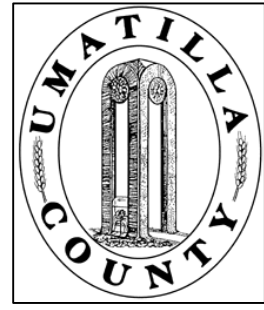


This map was prepared for Assessment & Taxation purposes only and was NOT prepared nor is it suitable for legal, engineering or surveying purposes.



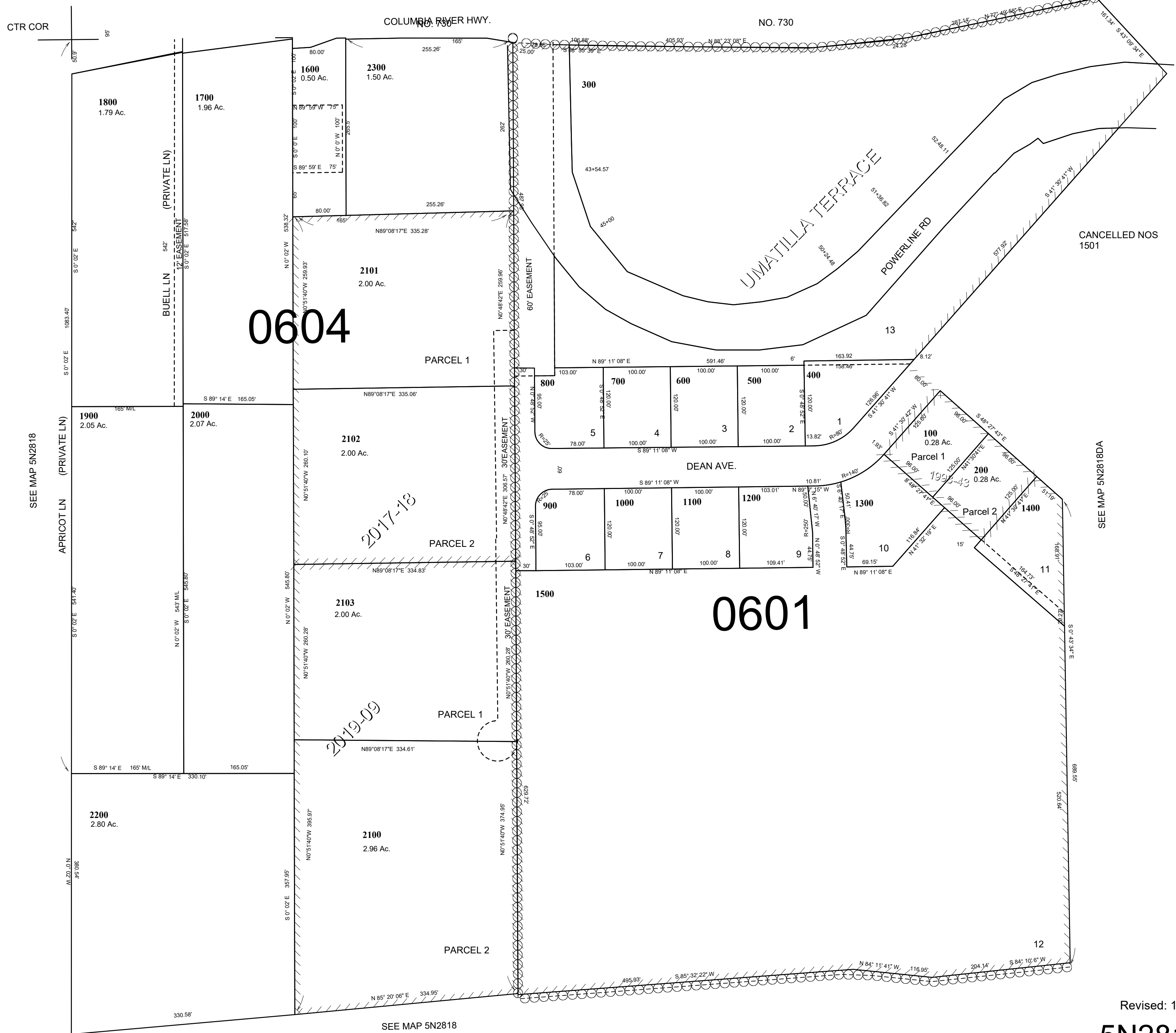
NW1/4 SE1/4 SEC 18 T5N R28E WM

5N2818DB

UMATILLA COUNTY

SCALE: 1" = 100'

SEE MAP 5N2818



CANCELLED NOS 1501

SEE MAP 5N2818DA

Revised: 11-06-19  
5N2818DB