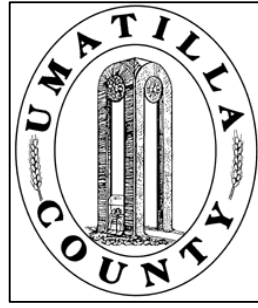


This map was prepared for Assessment & Taxation purposes only and was NOT prepared nor is it suitable for legal, engineering or surveying purposes.

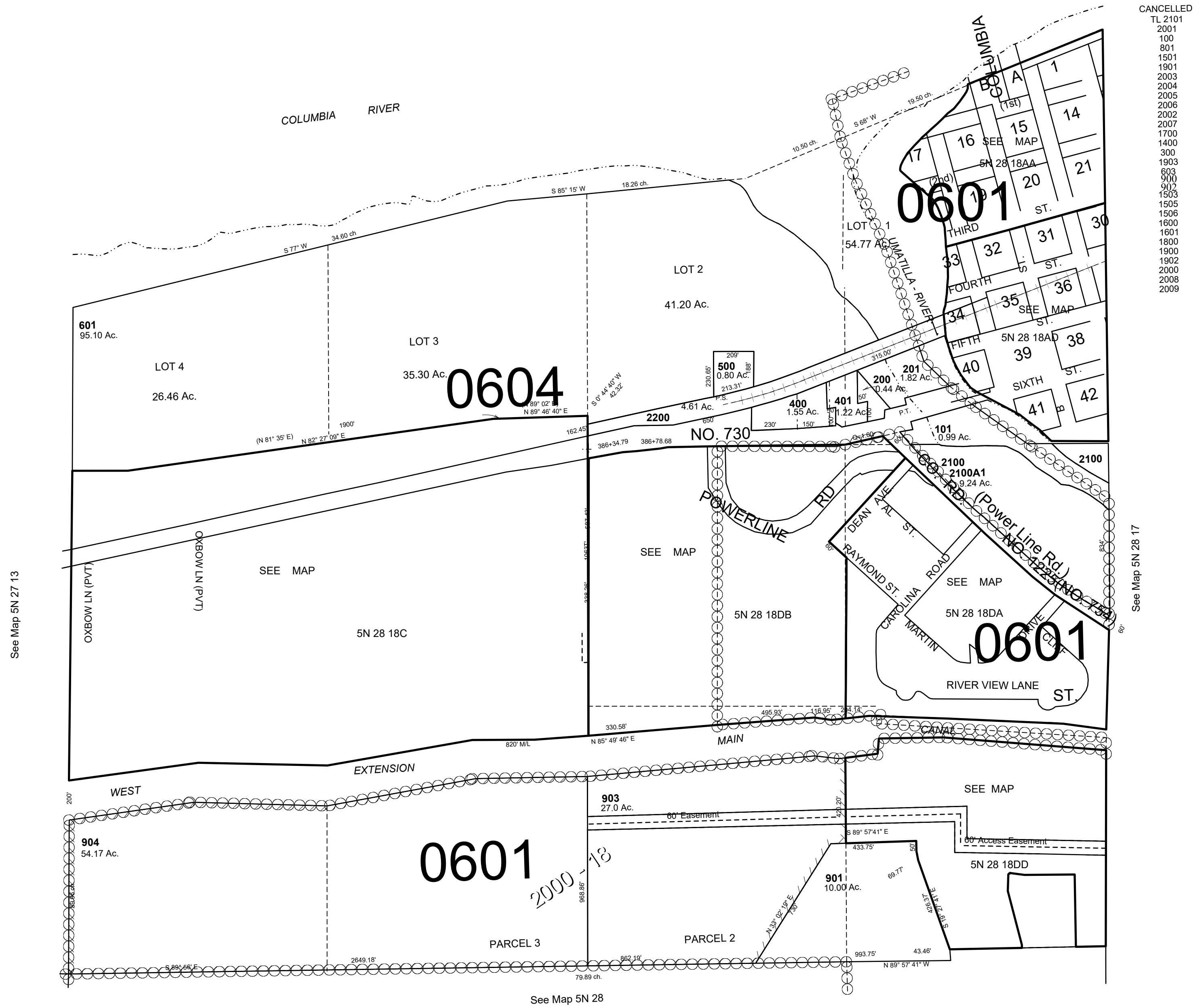


SEC 18 T 5N R 28 E WM UMATILLA COUNTY

SCALE: 1" = 400'

5N2818

Aerial Photo No. NZ 1P-56



- CANCELLED
- TL 2101
 - 2001
 - 100
 - 801
 - 1501
 - 1901
 - 2003
 - 2004
 - 2005
 - 2006
 - 2002
 - 2007
 - 1700
 - 1400
 - 300
 - 1903
 - 603
 - 900
 - 902
 - 1503
 - 1505
 - 1506
 - 1600
 - 1601
 - 1800
 - 1900
 - 1902
 - 2000
 - 2008
 - 2009

See Map 5N 27 13

See Map 5N 28 17

See Map 5N 28

Revised: 11-06-19

5N2818