

This map was prepared for Assessment & Taxation purposes only and was NOT prepared nor is it suitable for legal, engineering or surveying purposes.

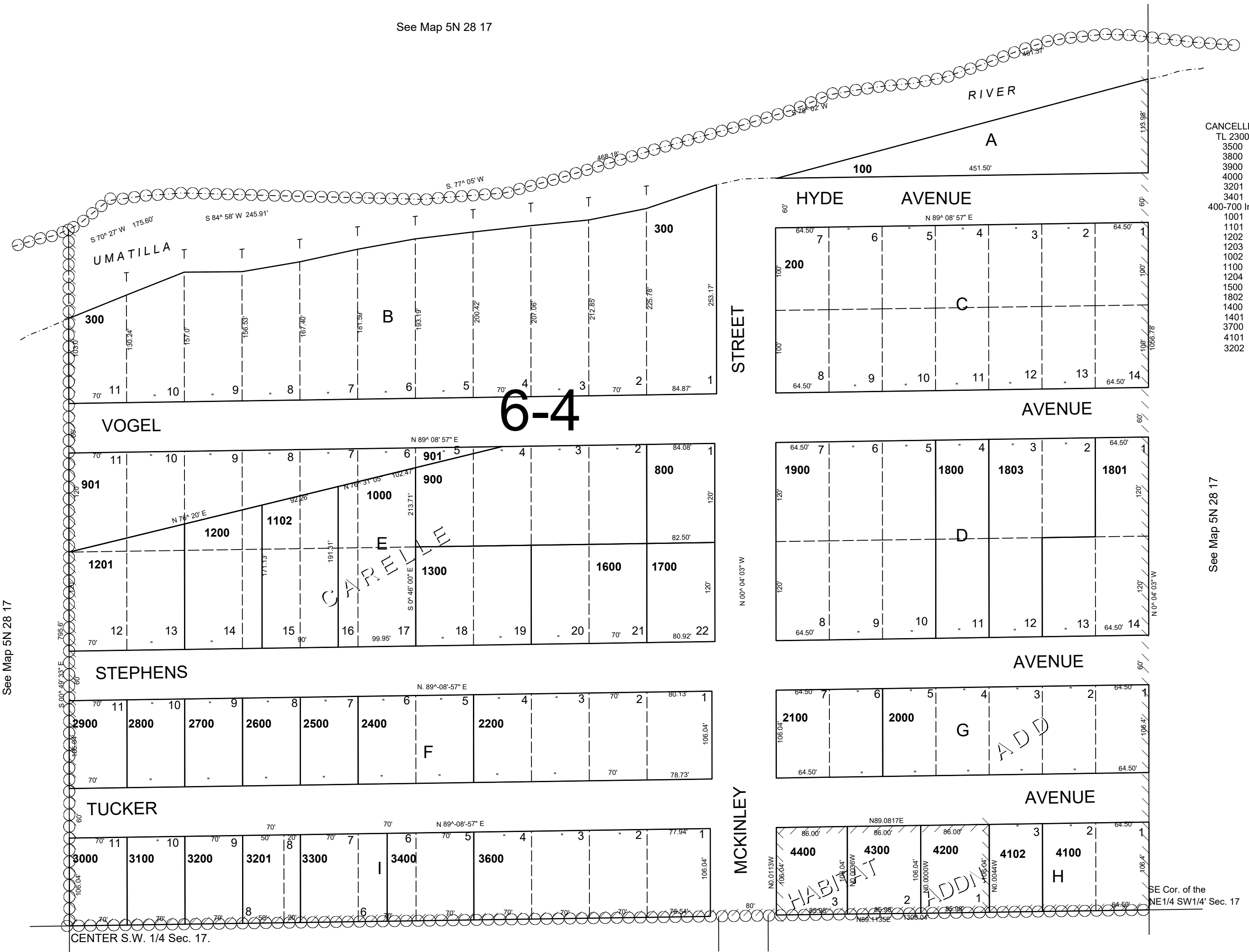
NW 1/4 SW 1/4 T5NR28E WM UMATILLA COUNTY

5N 28 17CA

AERIAL PHOTO NO. NZ 1P-56

SCALE 1"=100'

See Map 5N 28 17



See Map 5N 28 17

REVISED: 01-14-19

5N 28 17CA