

This map was prepared for Assessment & Taxation purposes only and was NOT prepared nor is it suitable for legal, engineering or surveying purposes.

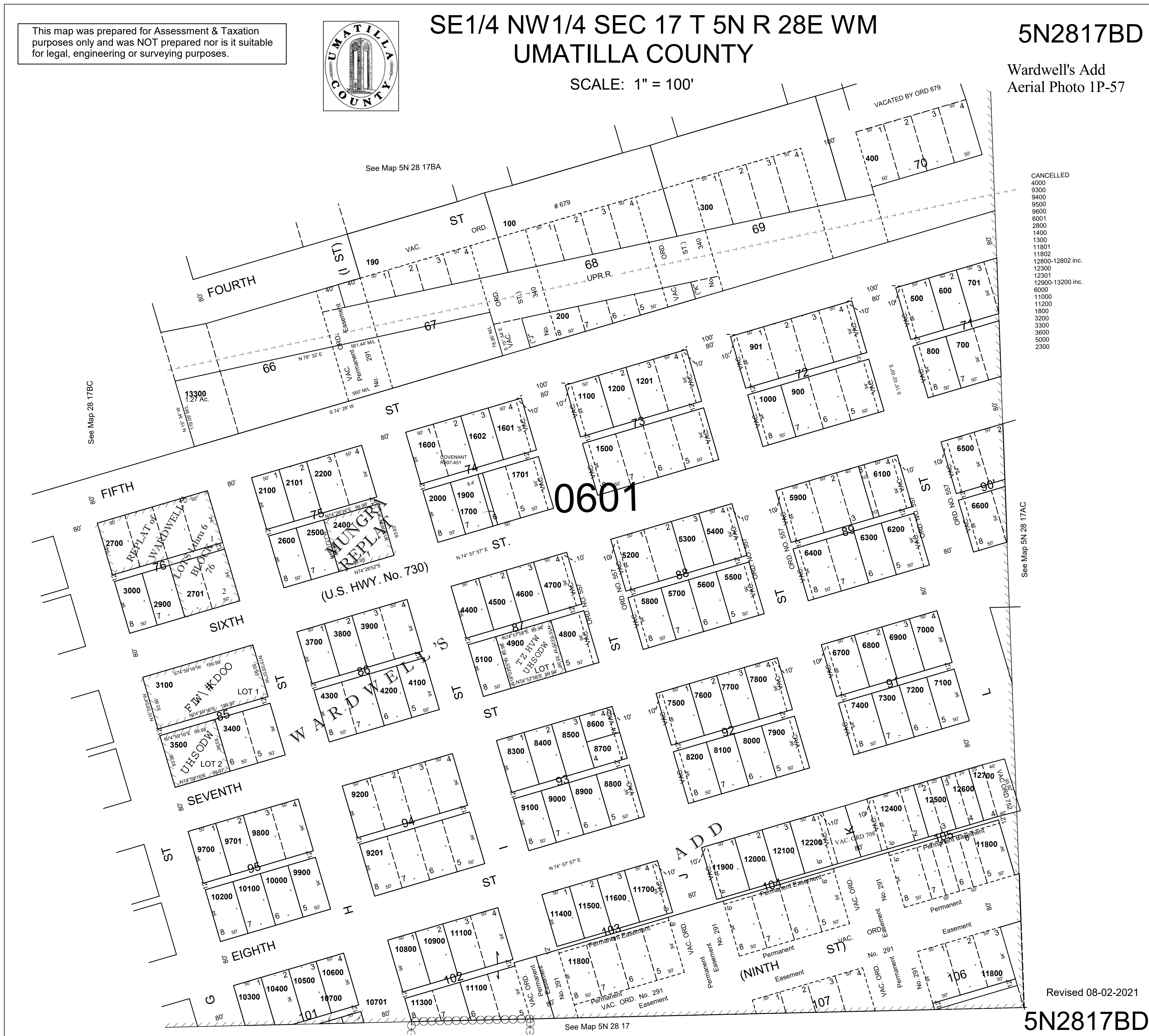


SE1/4 NW1/4 SEC 17 T 5N R 28E WM  
UMATILLA COUNTY

5N2817BD

Wardwell's Add  
Aerial Photo 1P-57

SCALE: 1" = 100'



- CANCELLED
- 4000
- 9300
- 9400
- 9500
- 9600
- 6001
- 2800
- 1400
- 1300
- 11801
- 11802
- 12800-12802 inc.
- 12300
- 12301
- 12900-13200 inc.
- 6000
- 11000
- 11200
- 1800
- 3200
- 3300
- 3600
- 5000
- 2300

See Map 5N 28 17AC

See Map 5N 28 17

Revised 08-02-2021

5N2817BD