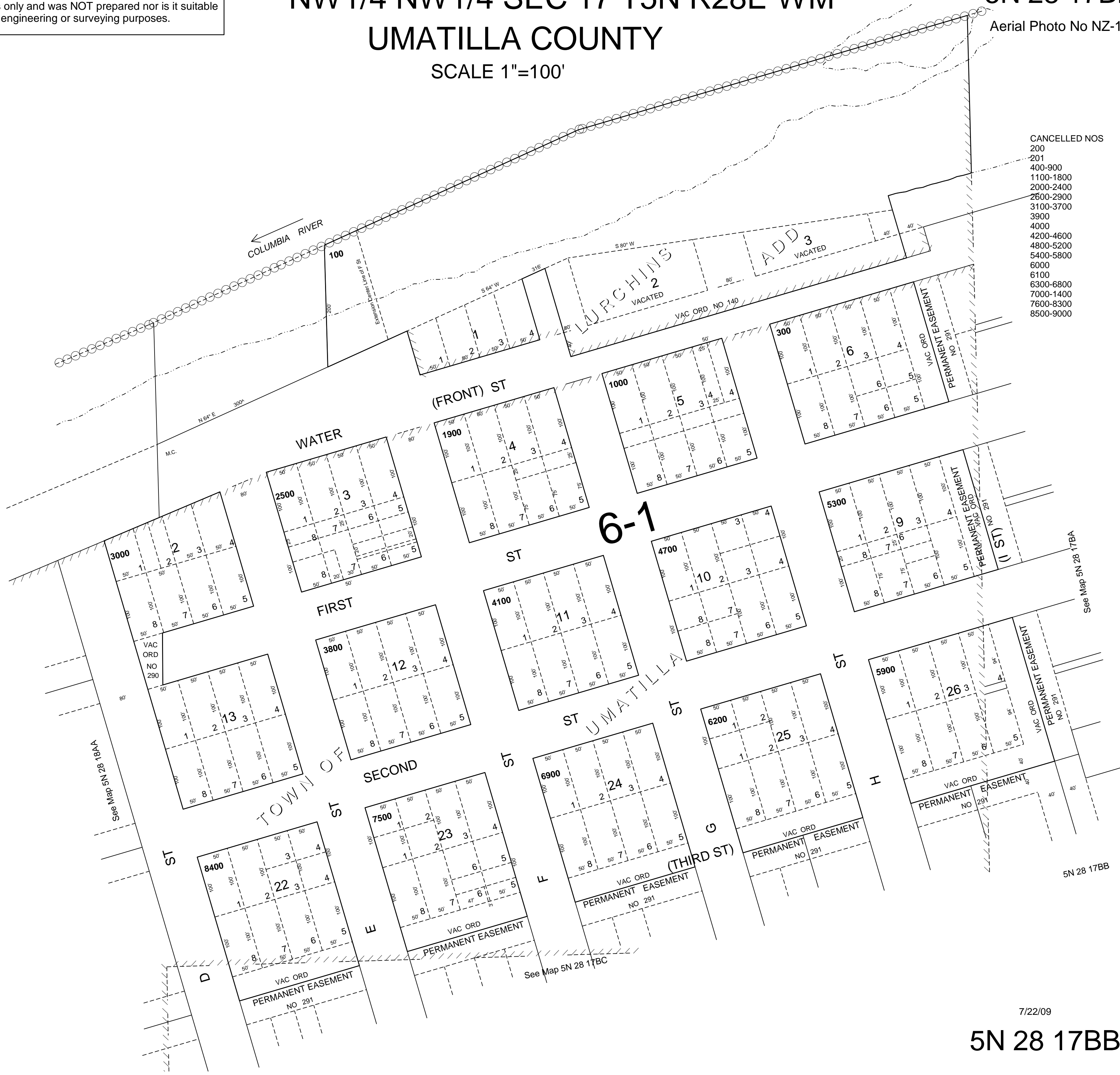


This map was prepared for Assessment & Taxation purposes only and was NOT prepared nor is it suitable for legal, engineering or surveying purposes.

NW1/4 NW1/4 SEC 17 T5N R28E WM
UMATILLA COUNTY
SCALE 1"=100'

5N 28 17BB
Aerial Photo No NZ-1P-57



- CANCELLED NOS
200
201
400-900
1100-1800
2000-2400
2600-2900
3100-3700
3900
4000
4200-4600
4800-5200
5400-5800
6000
6100
6300-6800
7000-1400
7600-8300
8500-9000

7/22/09

5N 28 17BB