

This map was prepared for assessment purposes

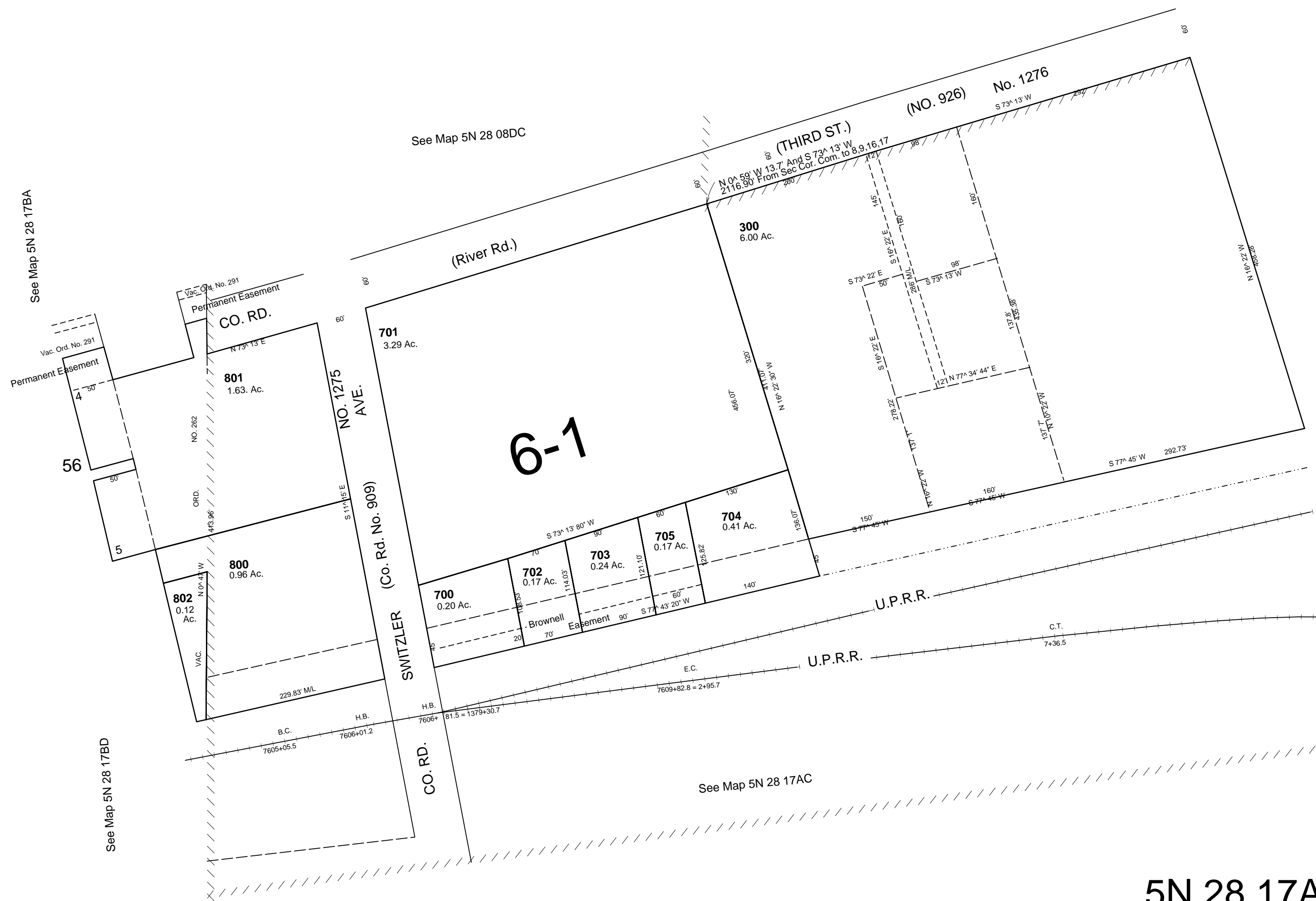
NW1/4 NE1/4 SEC 17 T5N R28E WM  
UMATILLA COUNTY  
SCALE 1"=100'

9/25/06

5N 28 17AB

AERIAL PHOTO NO. 1P-58

CANCELLED  
TL 100  
200  
400  
500  
600



5N 28 17AB