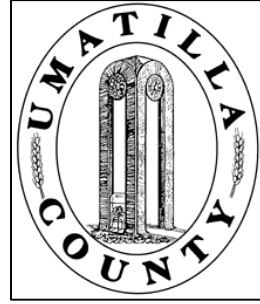


This map was prepared for Assessment purposes only.



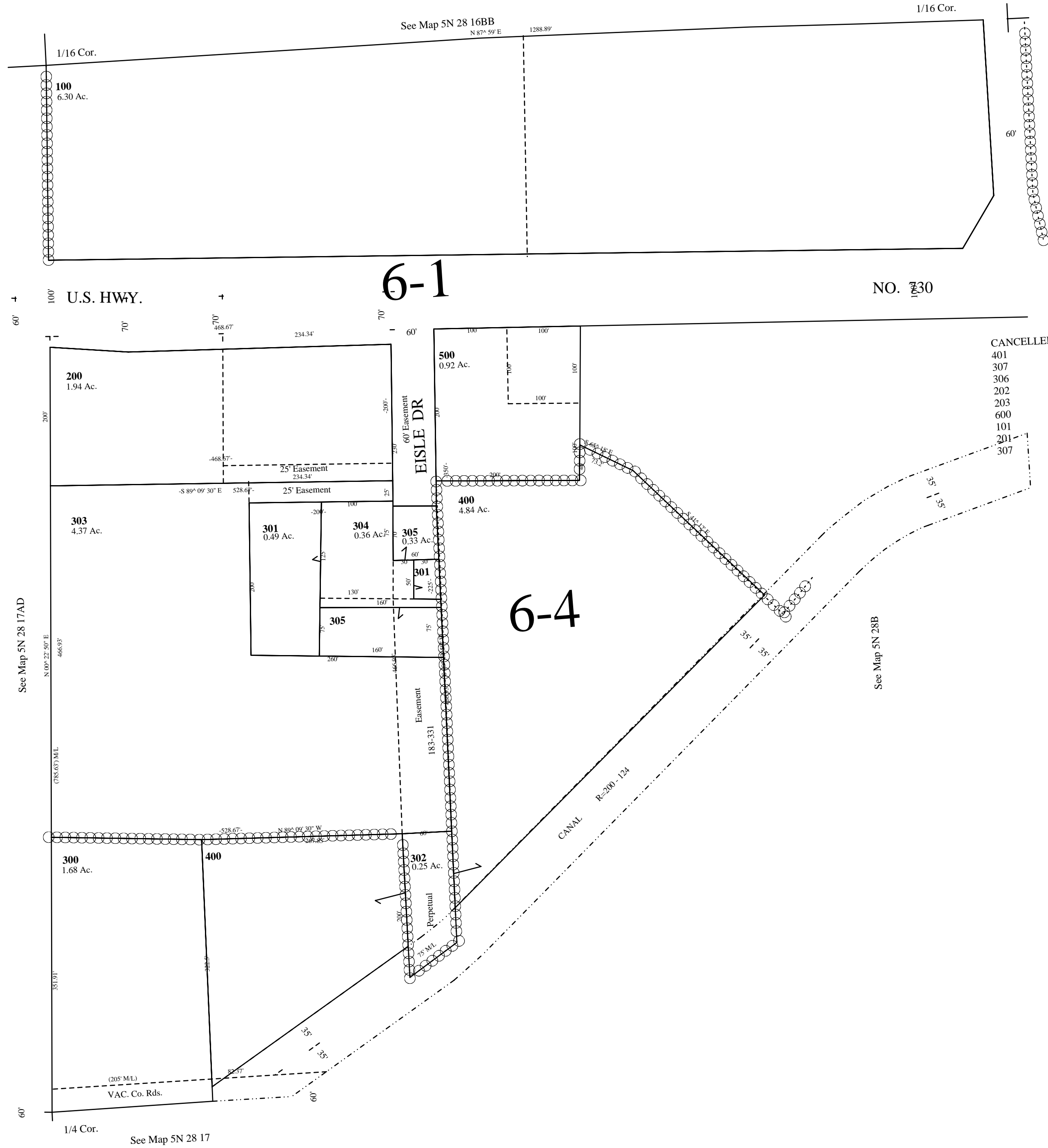
SW1/4 NW1/4 SEC 16 T 5N R 28E WM UMATILLA COUNTY, OR

8/13/03

5N2816BC

Aerial Photo No. 1P-58

SCALE: 1" = 100'



CANCELLED
 401
 307
 306
 202
 203
 600
 101
 201
 307

6-1

6-4

5N2816BC