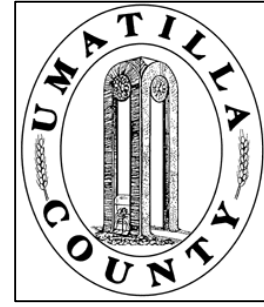
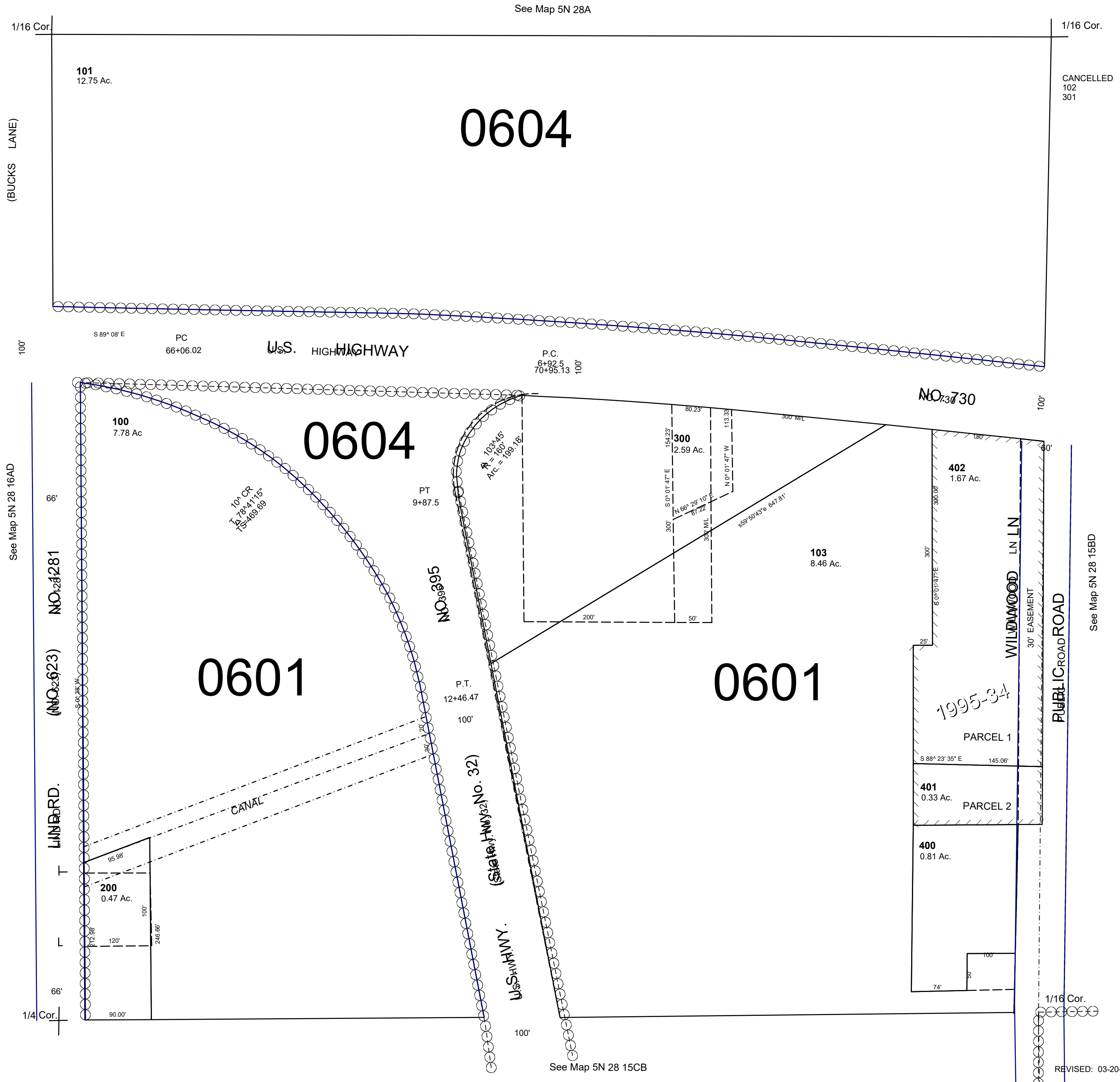


This map was prepared for Assessment & Taxation purposes only and was NOT prepared nor is it suitable for legal, engineering or surveying purposes.



SW1/4 NW1/4 SEC 15 T 5N R 28E WM  
**UMATILLA COUNTY**  
 SCALE: 1" = 100'

**5N2815BC**  
 Aerial Photo No. 1P-58



REVISED: 03-20-20

**5N2815BC**