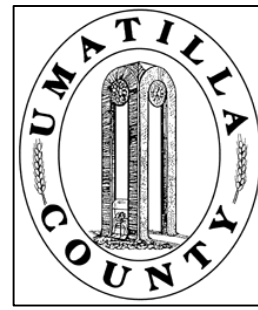


This map was prepared for Assessment & Taxation purposes only and was NOT prepared nor is it suitable for legal, engineering or surveying purposes.

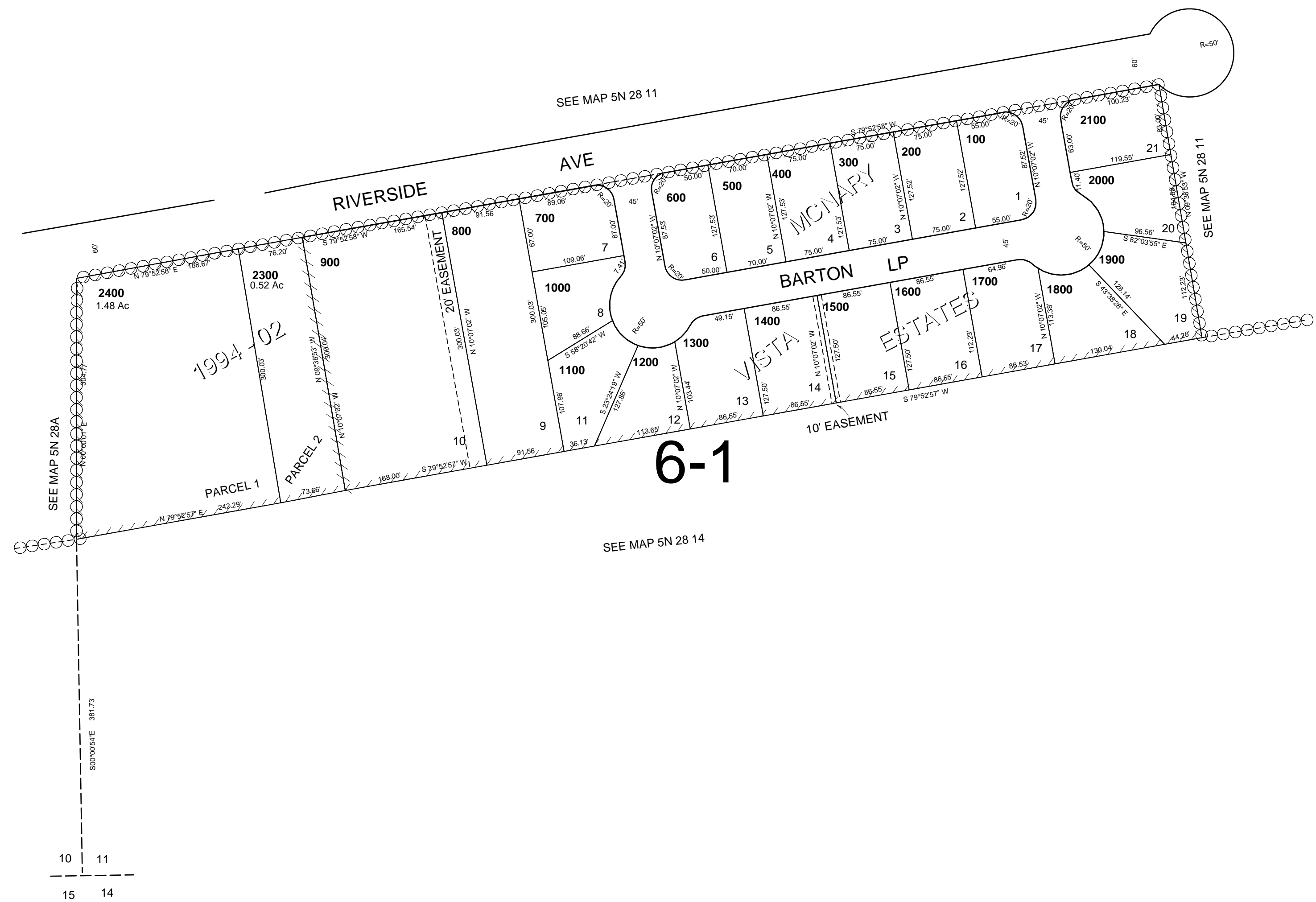


SW1/4 SW1/4 SEC 11 T 5N R 28E WM UMATILLA COUNTY

SCALE: 1" = 100'

5N2811CC

AERIAL PHOTO NO., NZ-1P-58-60
102-103



Revised: 5/29/14

5N2811CC