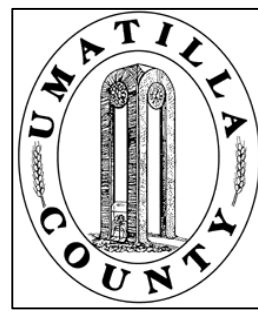


This map was prepared for Assessment & Taxation purposes only and was NOT prepared nor is it suitable for legal, engineering or surveying purposes.

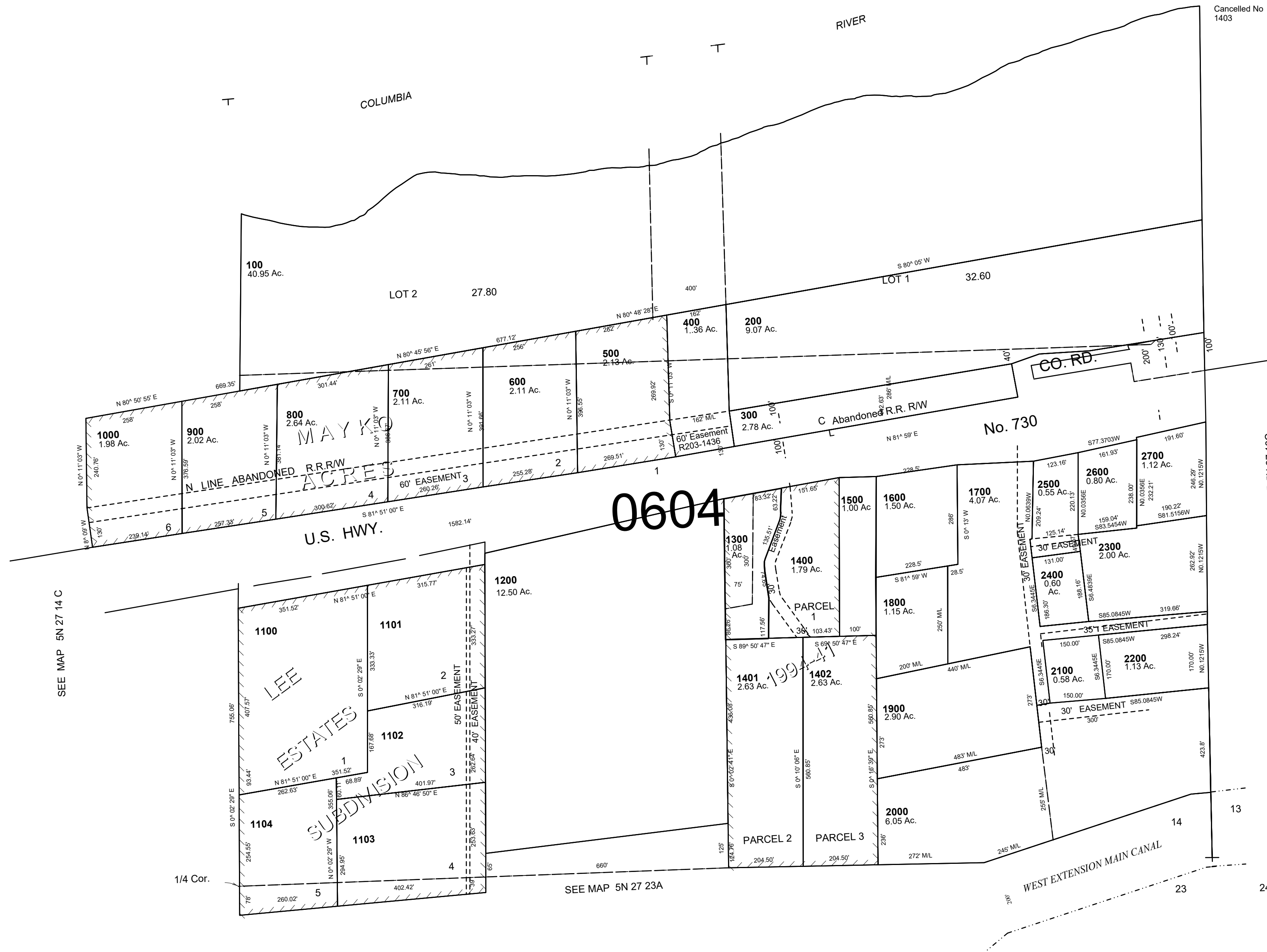


SE1/4 SEC 14 T 5N R 27 E WM
UMATILLA COUNTY,

SCALE: 1" = 200'

5N2714D

Mayko Acres
Lee Estates



Cancelled No 1403

SEE MAP 5N 27 14 C

SEE MAP 5N 27 23A

SEE MAP 5N 27 13C

REVISED:01-22-19

5N2714D