

This map was prepared for Assessment & Taxation purposes only and was NOT prepared nor is it suitable for legal, engineering or surveying purposes.

T5N R32E WM UMATILLA COUNTY

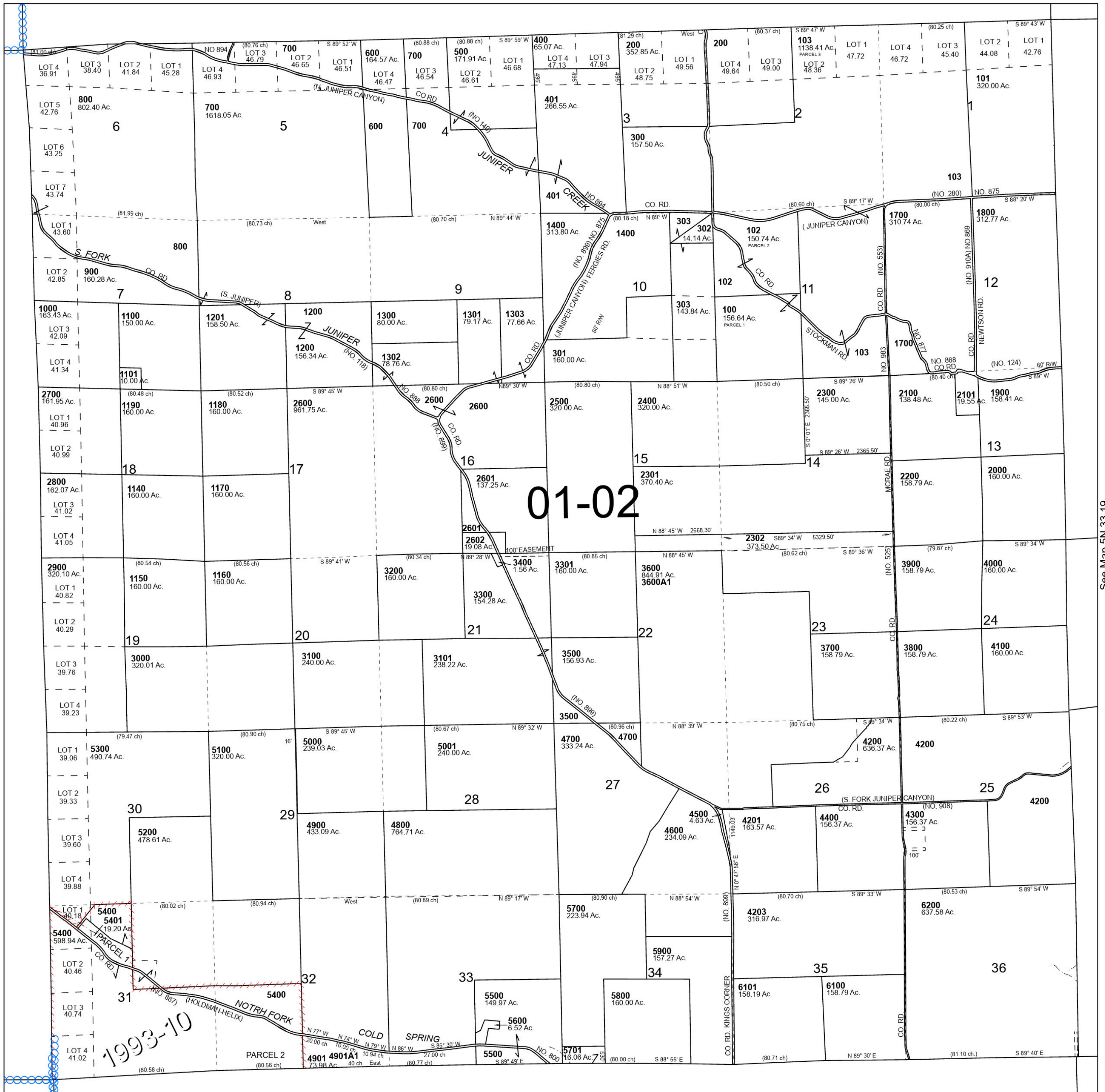
5N 32

Cancelled Tax Lots

- 2600A1
- 3700A1
- 4501
- 6000

SCALE 1" = 2,000'

See Map 6N 32



See Map 5N 31

See Map 5N 33 19

01-02

1993-10

Revised 3/6/2024

See Map 4N 32

5N 32