

This map was prepared for Assessment & Taxation purposes only and was NOT prepared nor is it suitable for legal, engineering or surveying purposes.

SEC 27 T5N R29E WM UMATILLA COUNTY

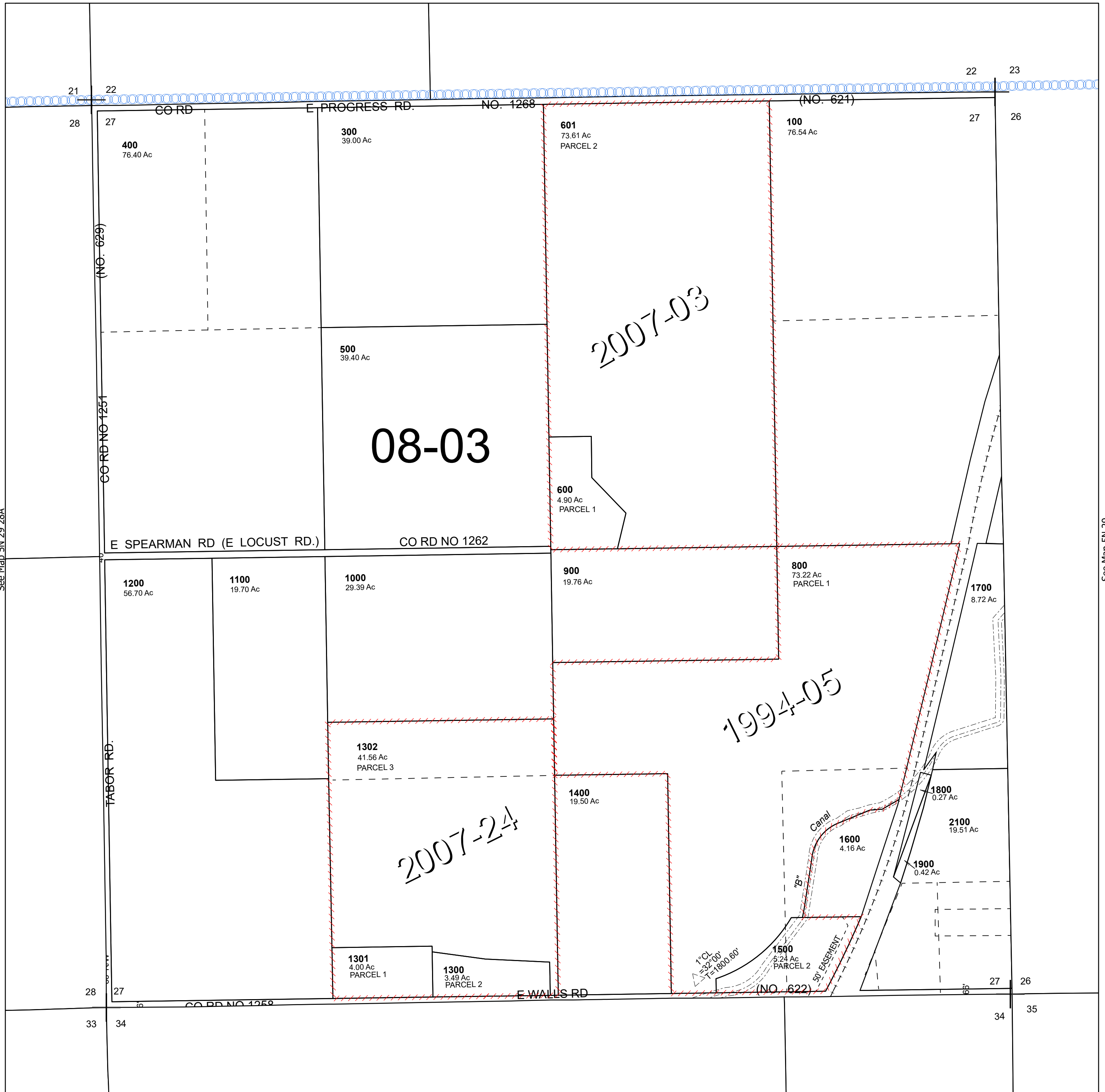
5N 29 27

Cancelled Tax Lots

200
2000
2200
2100A1

SCALE 1" = 400'

See Map 5N 29



See Map 5N 29 28A

See Map 5N 29

5N 29 27