

This map was prepared for Assessment & Taxation purposes only and was NOT prepared nor is it suitable for legal, engineering or surveying purposes.

Cancelled Tax Lots

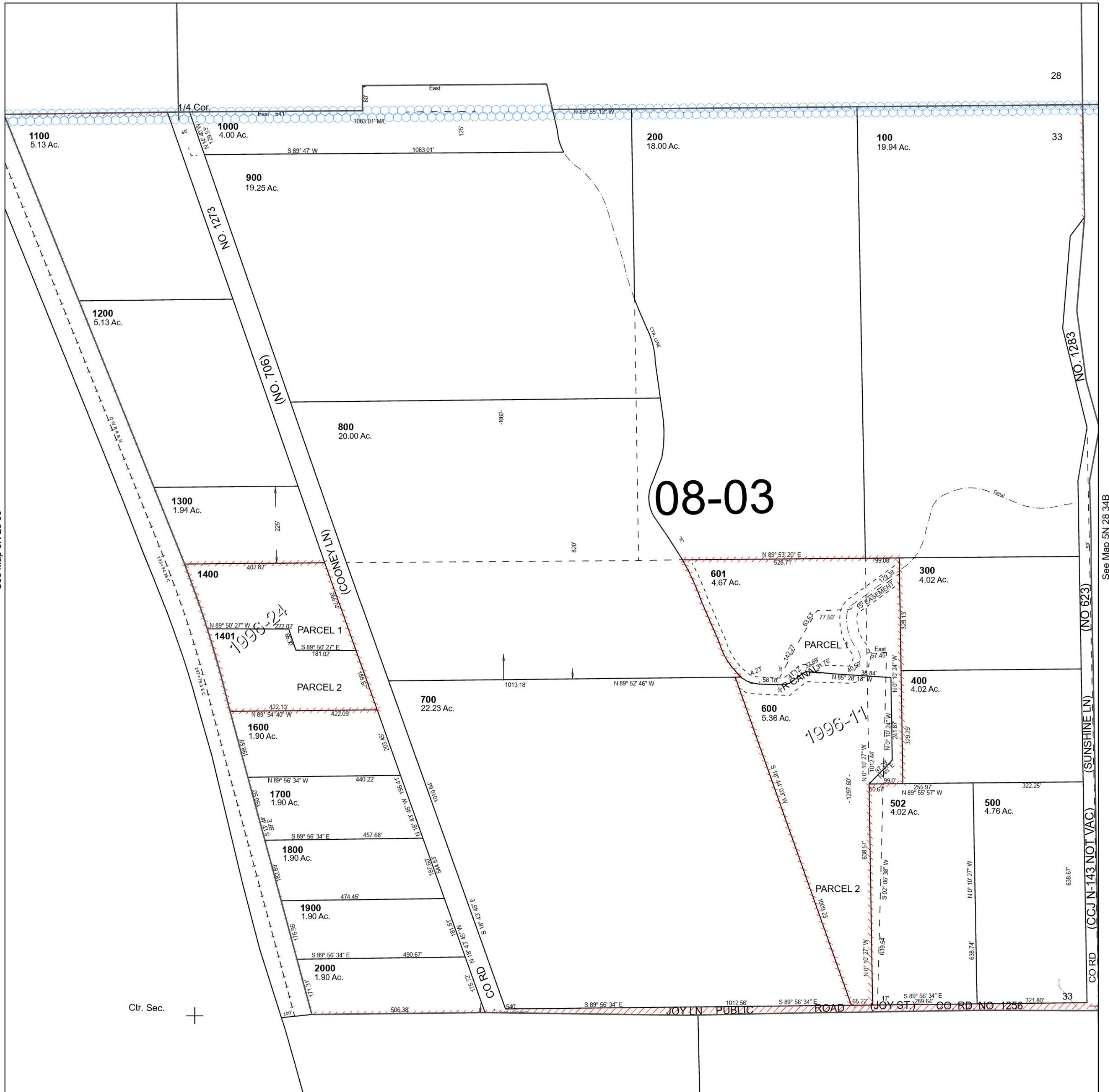
401
501
1500

NE 1/4 SEC 33 T5N R28E WM UMATILLA COUNTY

5N 28 33A

SCALE 1" = 200'

See Map 5N 28 28D



See Map 5N 28 33

See Map 5N 28 34B

5N 28 33A