

This map was prepared for Assessment & Taxation purposes only and was NOT prepared nor is it suitable for legal, engineering or surveying purposes.

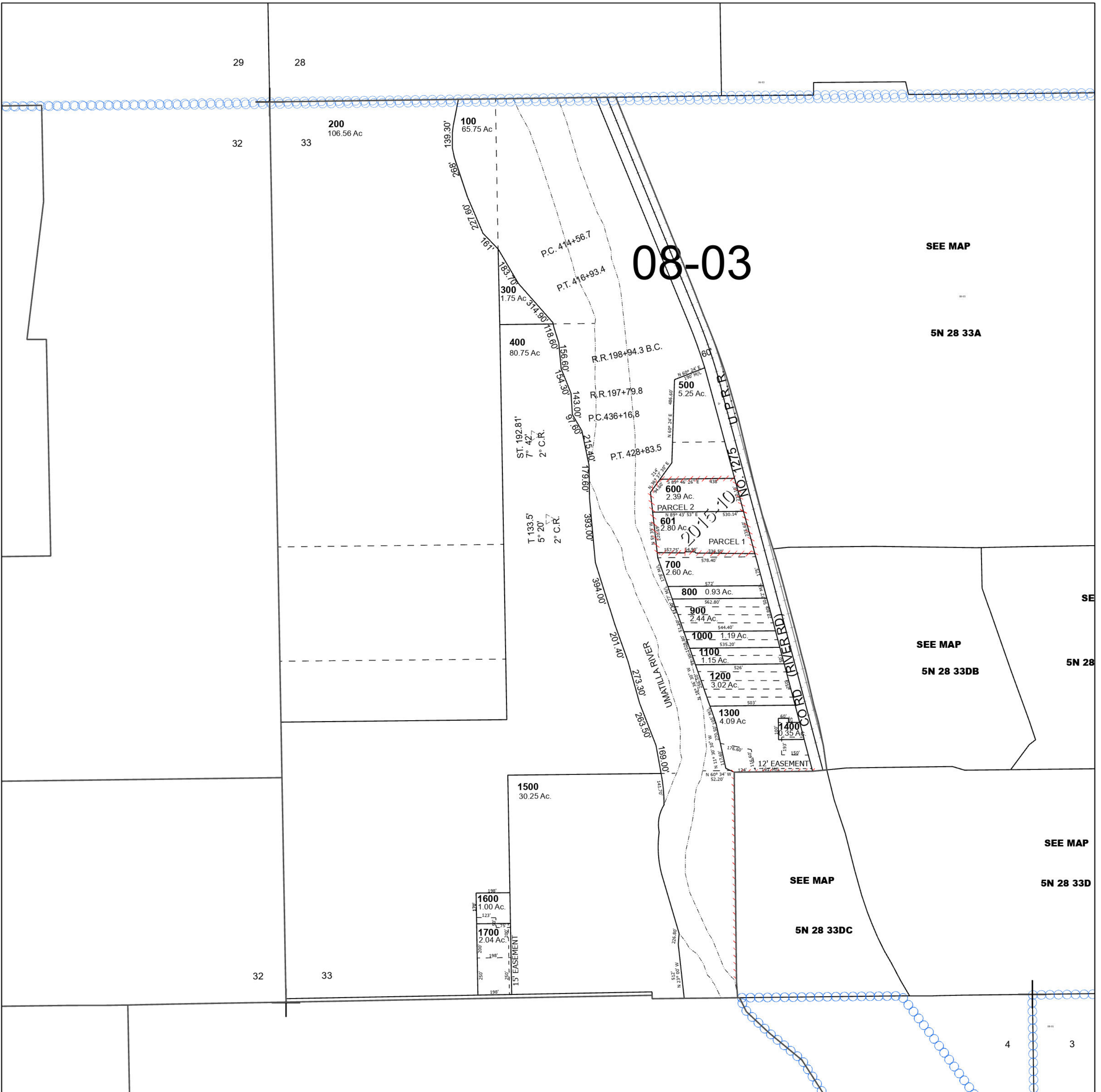
Cancelled Tax Lots

# SEC 33 T5N R28E WM UMATILLA COUNTY

## 5N 28 33

SCALE 1" = 400'

See Map 5N 28 28C



See Map 5N 28

See Map 5N 28 33DB

Revised 6/7/2024

See Map 4N 28 04

## 5N 28 33