

This map was prepared for Assessment & Taxation purposes only and was NOT prepared nor is it suitable for legal, engineering or surveying purposes.

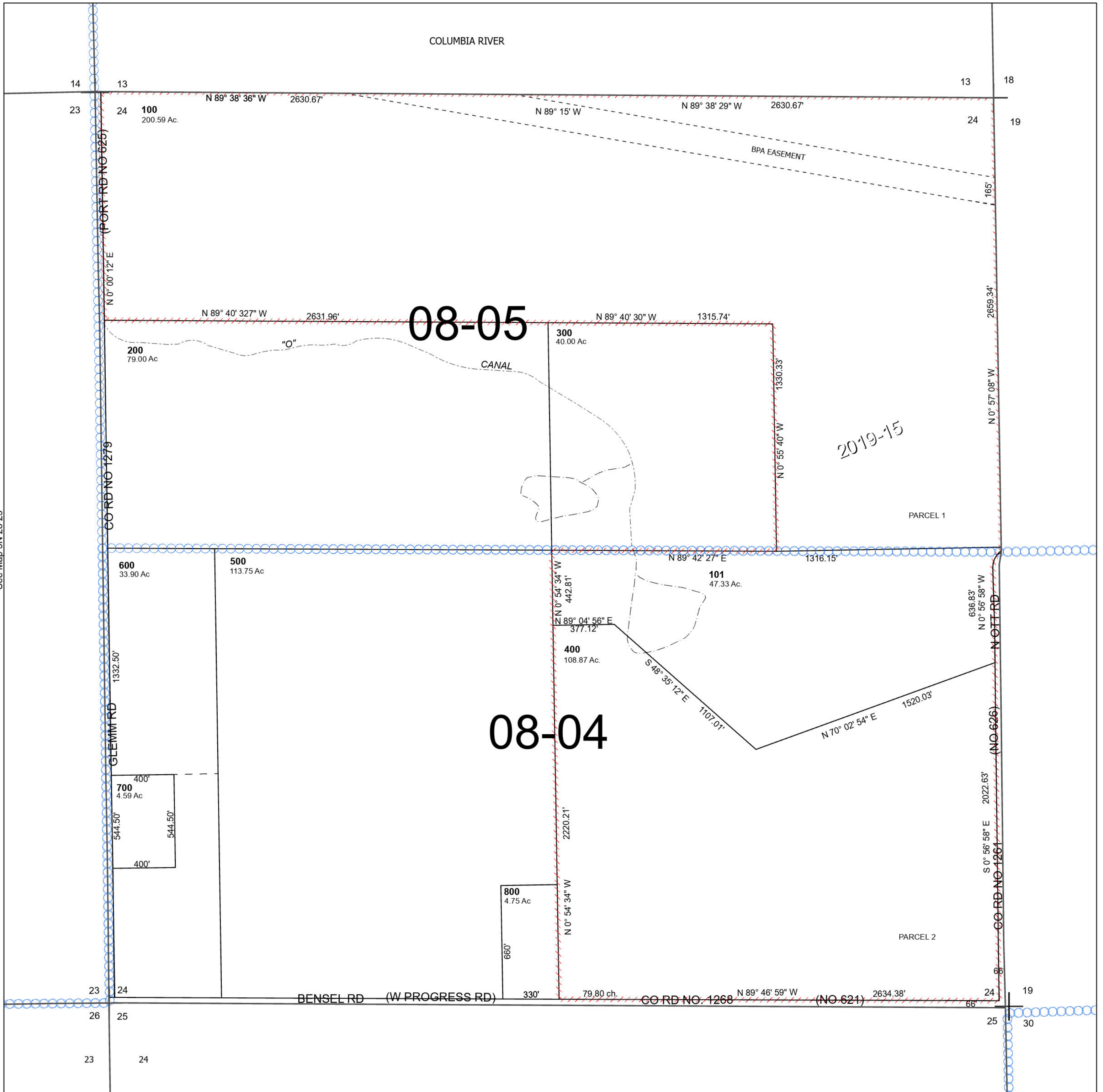
Cancelled Tax Lots

# SEC 24 T5N R28E WM UMATILLA COUNTY

## 5N 28 24

SCALE 1" = 400'

See Map 5N 28



See Map 5N 28 23

See Map 5N 29

Revised 6/10/2024

See Map 5N 28 25

## 5N 28 24