

This map was prepared for Assessment & Taxation purposes only and was NOT prepared nor is it suitable for legal, engineering or surveying purposes.

Cancelled Tax Lots

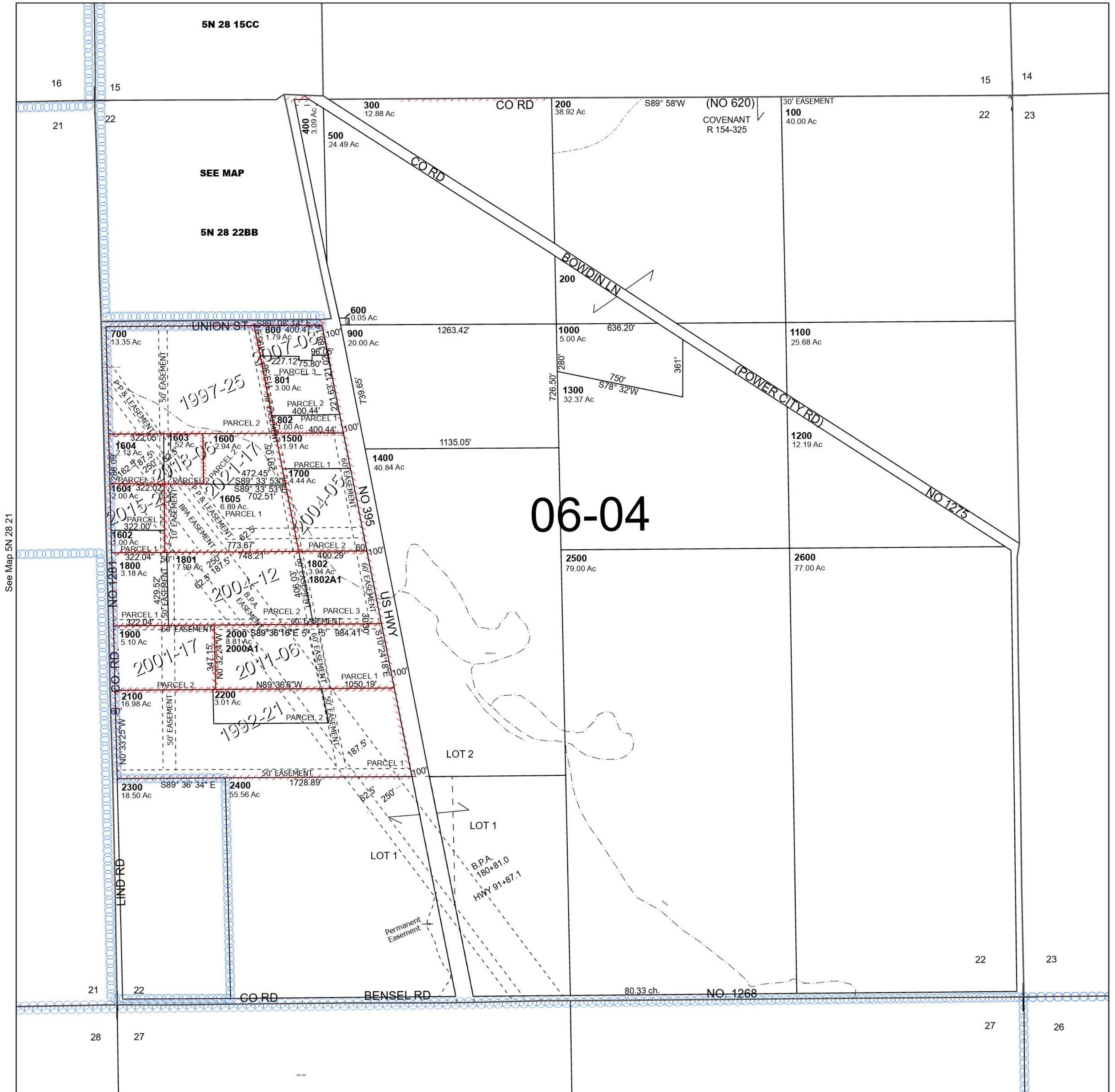
SEC 22 T5N R28E WM UMATILLA COUNTY

5N 28 22

Umatilla

SCALE 1" =400'

See Map 5N 28 15



See Map 5N 28 21

See Map 5N 28 23