

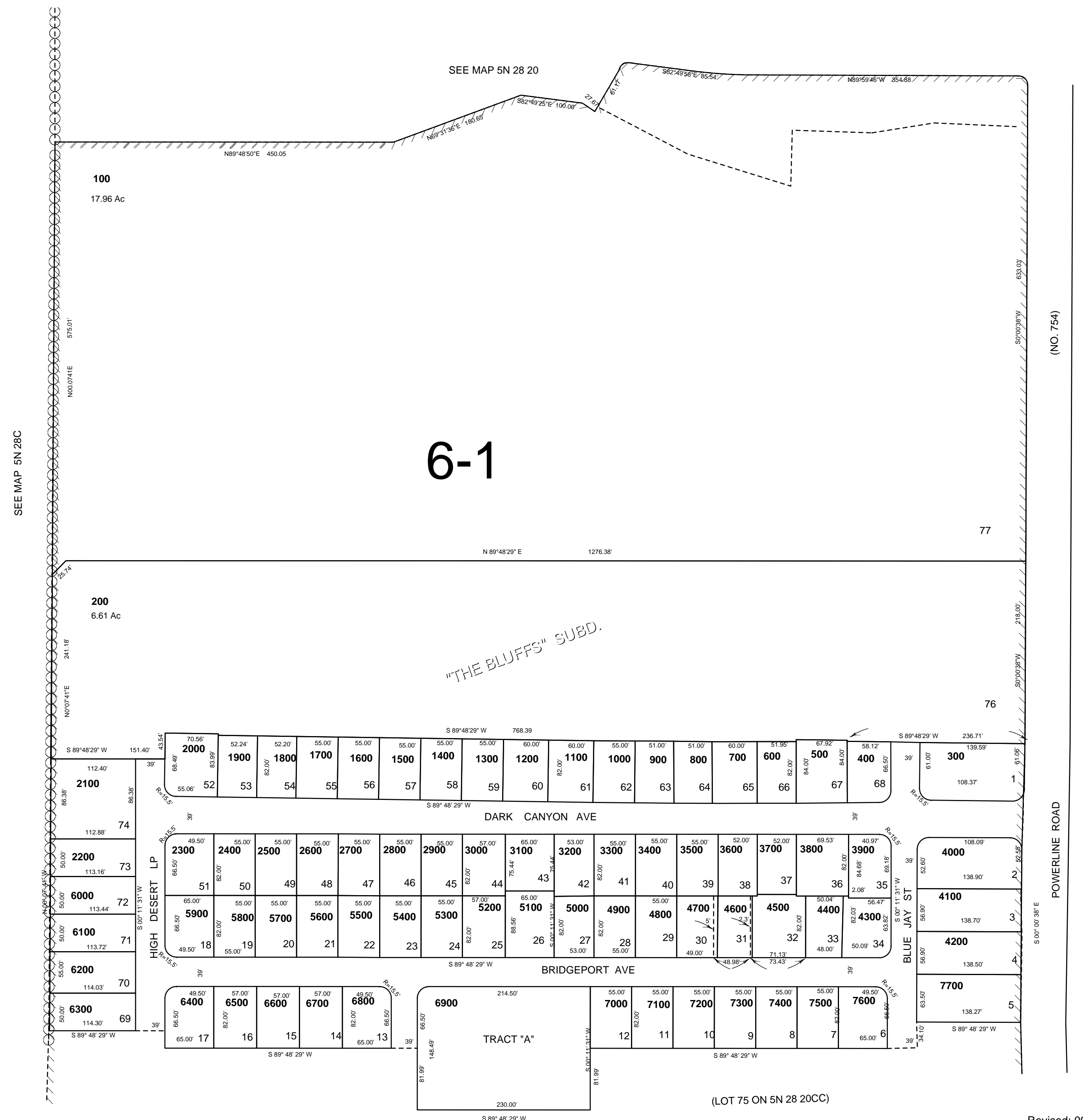
This map was prepared for Assessment & Taxation purposes only and was NOT prepared nor is it suitable for legal, engineering or surveying purposes.

NW 1/4 SW 1/4 SEC 20 T5NR28E WM UMATILLA COUNTY

5N2820CB

Aerial Photo No. 1P-56-58

SCALE 1"=100'



SEE MAP 5N 28C

SEE MAP 5N 28 20

6-1

"THE BLUFFS" SUBD.

SEE MAP 5N 28 20CC

Revised: 09-05-12

5N2820CB