

This map was prepared for Assessment & Taxation purposes only and was NOT prepared nor is it suitable for legal, engineering or surveying purposes.

SEC 14 T5N R28E WM UMATILLA COUNTY

5N 28 14

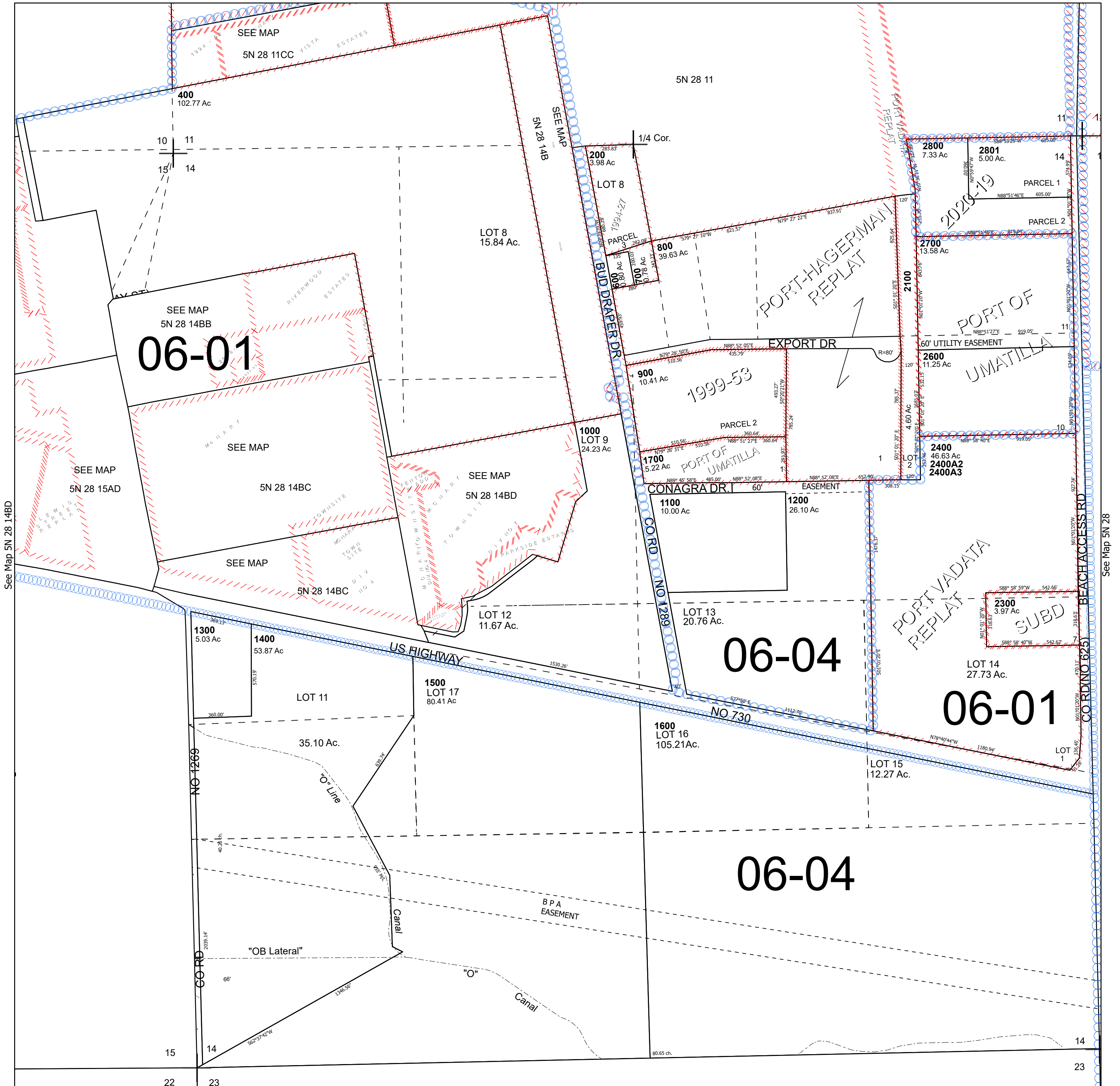
Umatilla

SCALE 1" = 400'

See Map 5N 28 11

Cancelled Tax Lots

- 100
- 300
- 500
- 1800
- 1900
- 2000
- 2200
- 2400A1
- 2500



See Map 5N 28 14BD

See Map 5N 28

Revised 9/17/2024

See Map 5N 28 23

5N 28 14