

This map was prepared for Assessment & Taxation purposes only and was NOT prepared nor is it suitable for legal, engineering or surveying purposes.

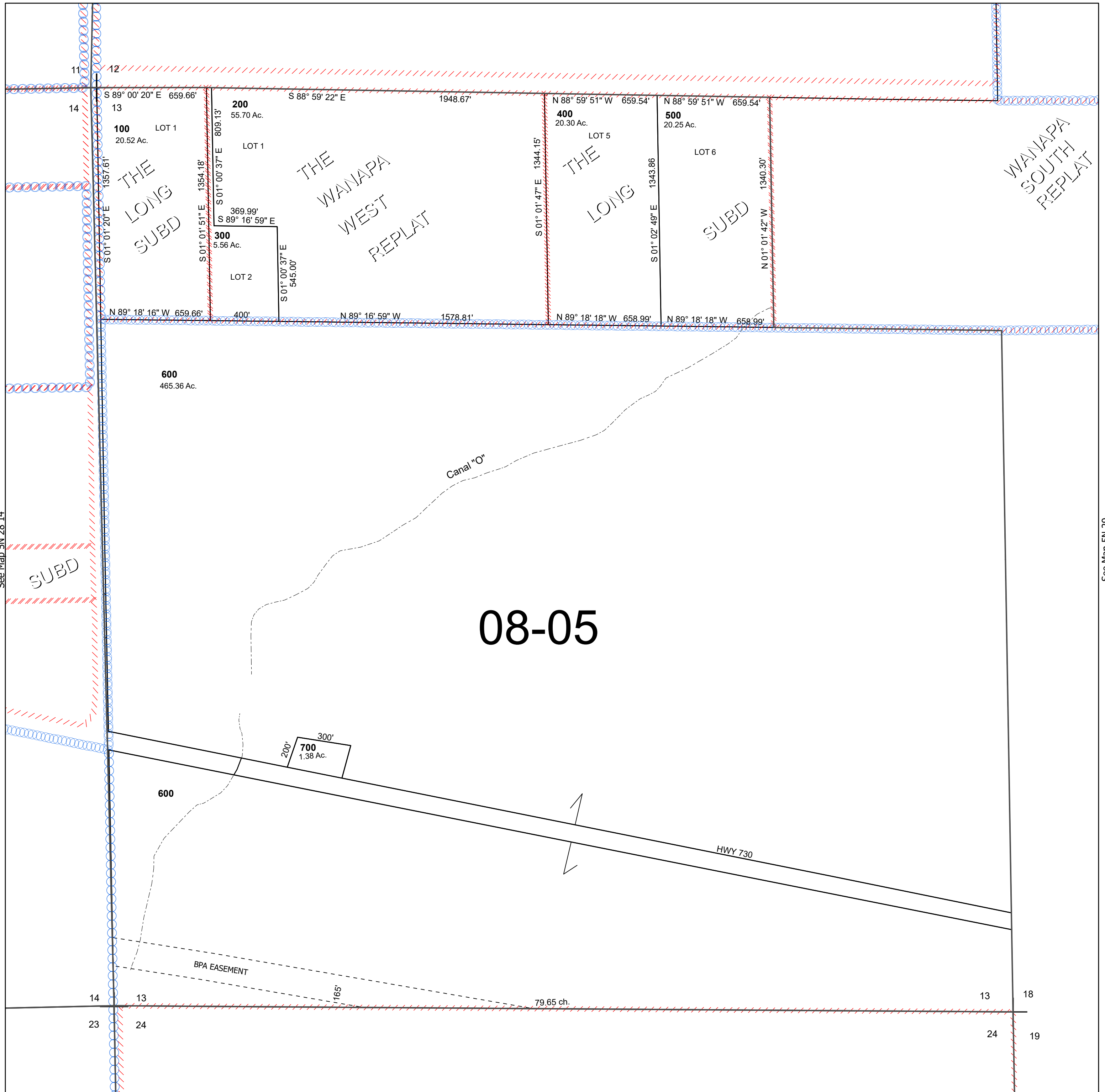
Cancelled Tax Lots

SEC 13 T5N R28E WM UMATILLA COUNTY

5N 28 13

SCALE 1" =400'

See Map 5N 28



See Map 5N 28 14

See Map 5N 29

08-05

Revised 7/2/2024

See Map 5N 28 24

5N 28 13