

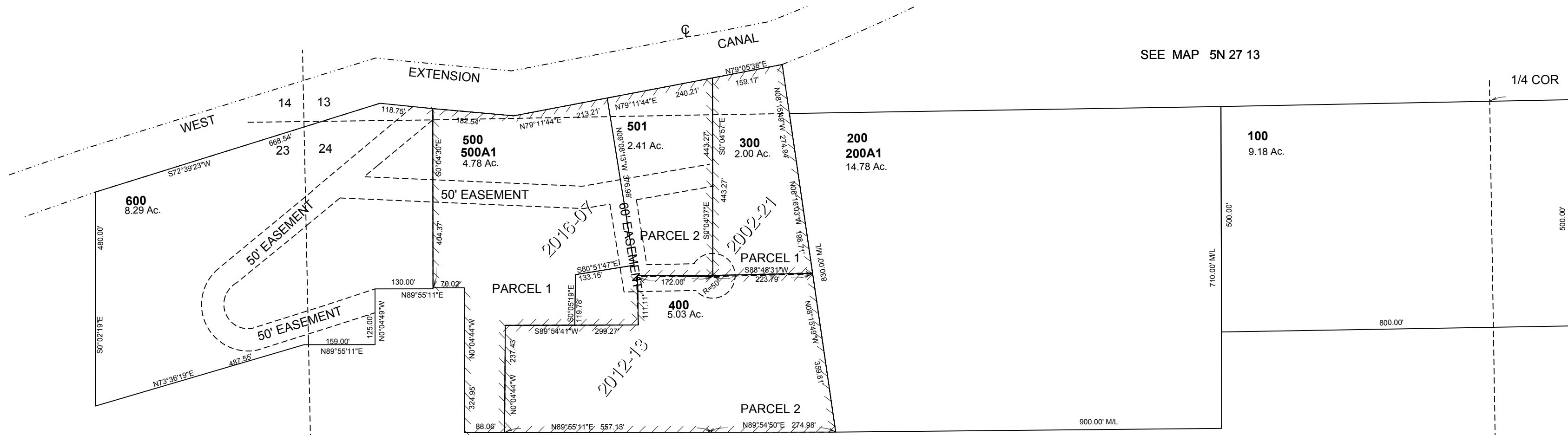
This map was prepared for Assessment & Taxation purposes only and was NOT prepared nor is it suitable for legal, engineering or surveying purposes.

NW1/4 SEC 24 T5N R27E WM UMATILLA COUNTY

5N 27 24B

AERIAL PHOTO NO. 1P-54

SCALE 1"=200'



6-4

SEE MAP 5N 27

SEE MAP 5N 27

SEE MAP 5N 27

Revised: 12-1-17

CTR SEC

5N 27 24B