

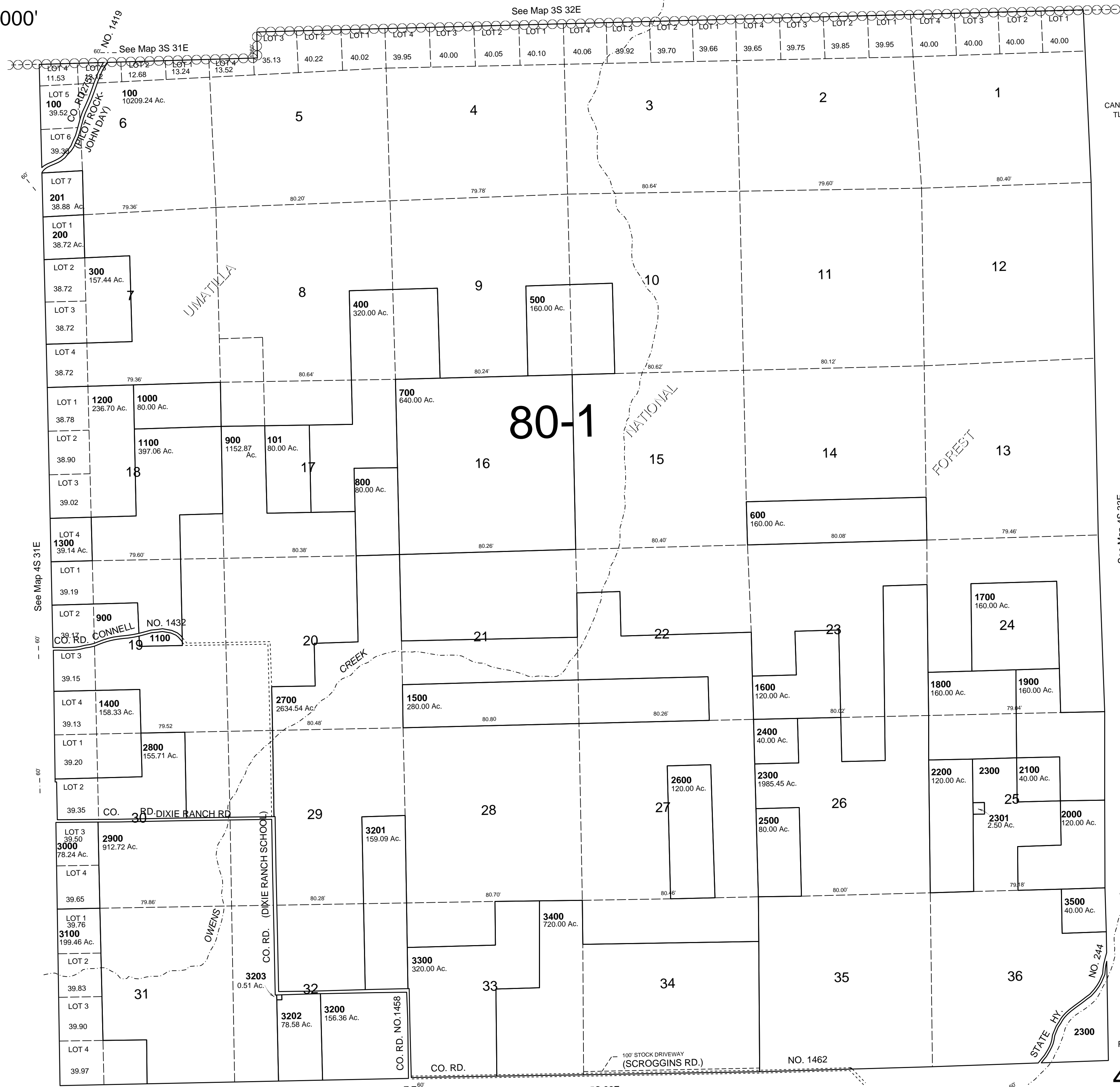
This map was prepared for Assessment & Taxation purposes only and was NOT prepared nor is it suitable for legal, engineering or surveying purposes.

T4S R32E WM UMATILLA COUNTY

4S 32

AERIAL PHOTO NO. NZ 10P 60-63

SCALE 1"=2000'



CANCELLED
TL 3290
901

See Map 4S 33E

Revised: 05-01-14

4S 32