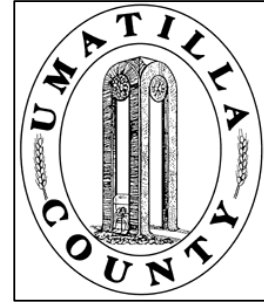


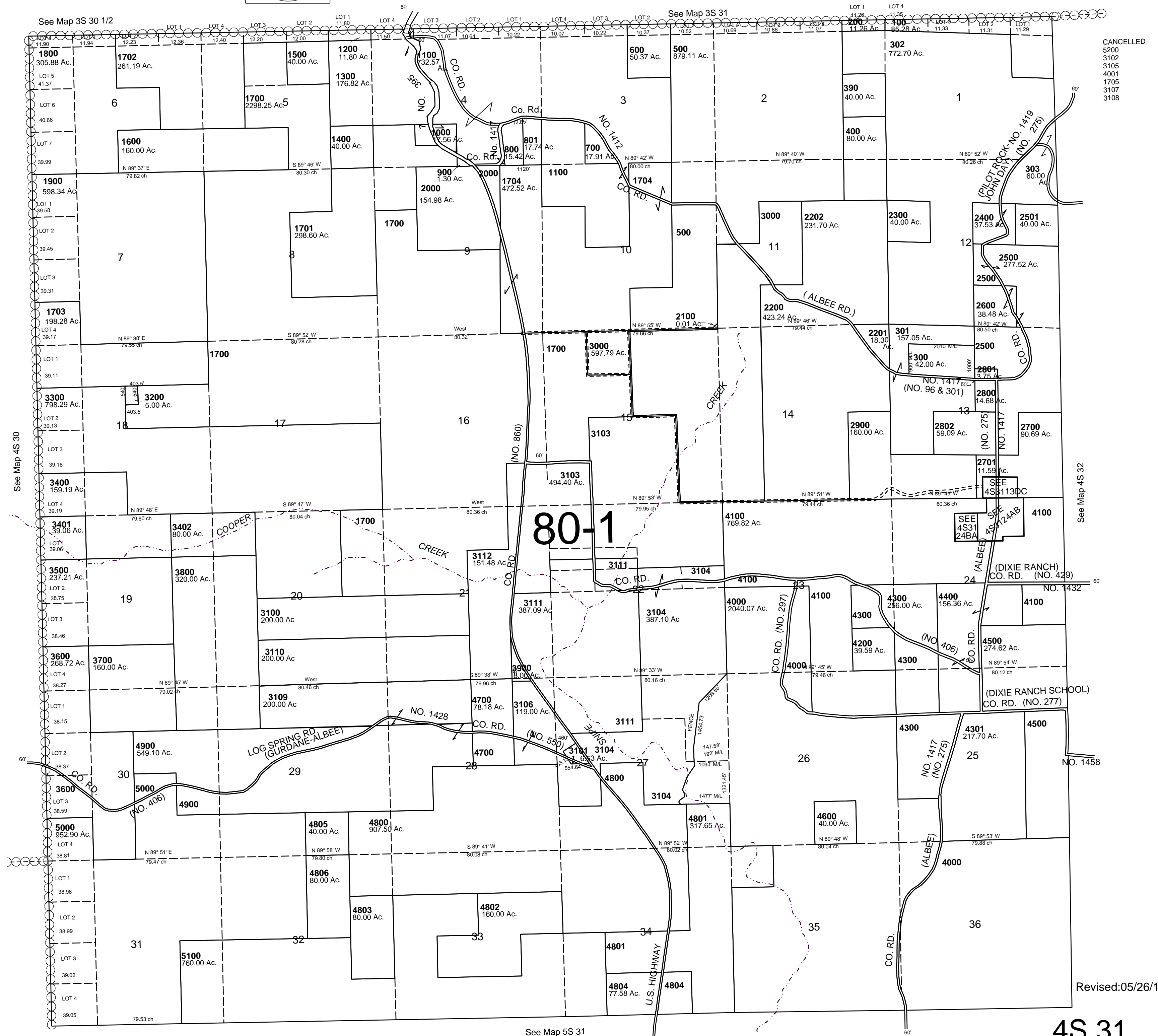
This map was prepared for Assessment & Taxation purposes only and was NOT prepared nor is it suitable for legal, engineering or surveying purposes.



T4S R31E WM UMATILLA COUNTY

SCALE: 1" = 2000'

4S31



CANCELLED
5200
3102
3105
4001
1705
3107
3108

Revised: 05/26/14

4S 31