

This map was prepared  
for assessment purposes

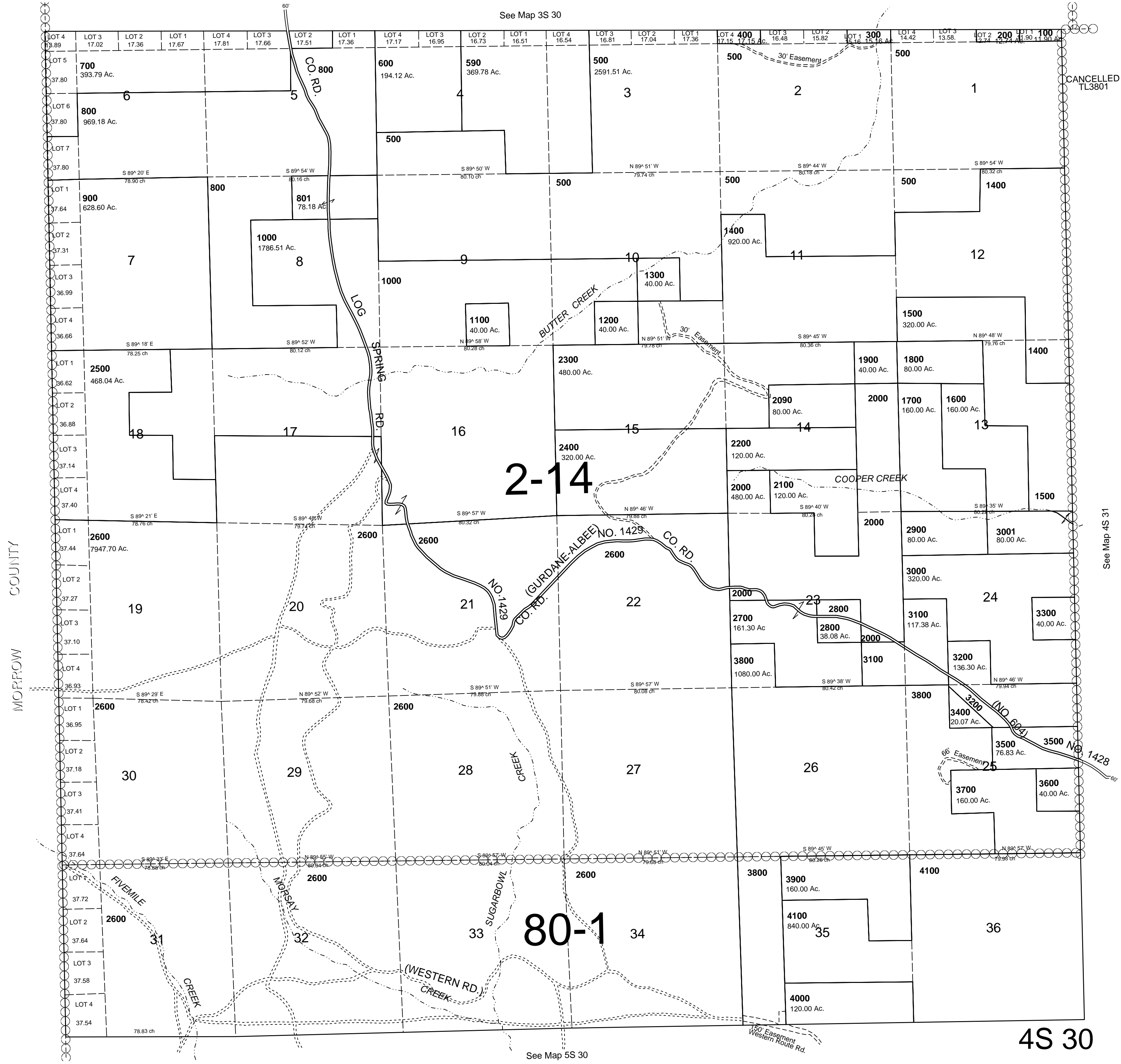
NW1/4 SW1/4 T NR E WM  
UMATILLA COUNTY

1/10/07

4S 30  
AERIAL PHOTO NO. 10P 33-38

1" = 2000'

See Map 3S 30



CANCELLED  
TL3801

See Map 4S 31

UMATILLA  
COUNTY

4S 30

See Map 5S 30