

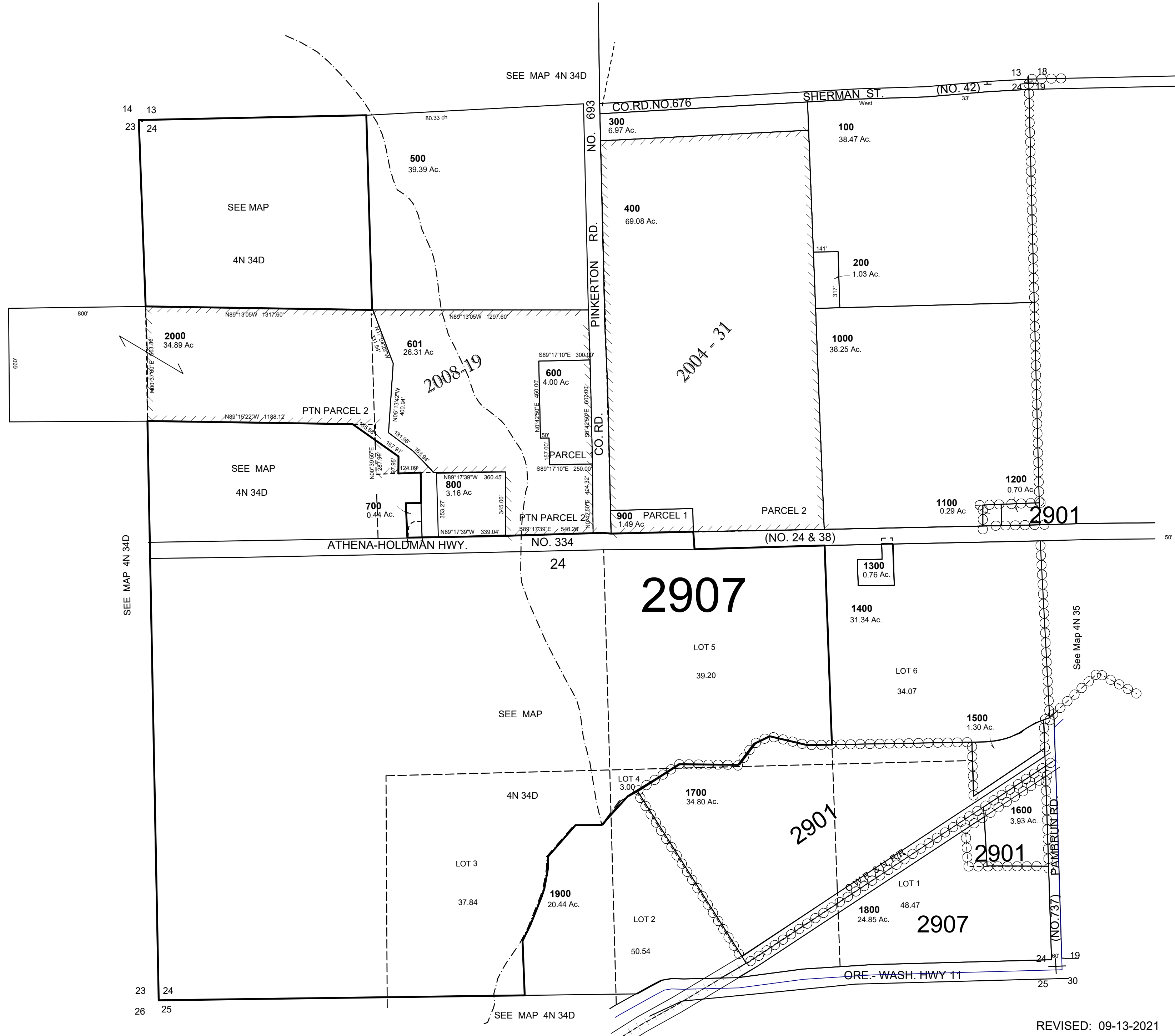
This map was prepared for Assessment & Taxation purposes only and was NOT prepared nor is it suitable for legal, engineering or surveying purposes.

# SEC 24 T4N R34E WM UMATILLA COUNTY

## 4N 34 24

AERIAL PHOTO NO. NZ 5P 54-60, 100-105 & 132-136

1"=400'



REVISED: 09-13-2021

## 4N 34 24