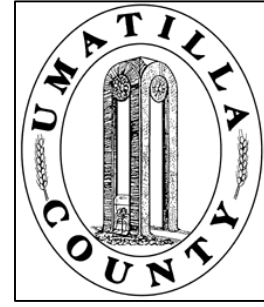


This map was prepared for Assessment & Taxation purposes only and was NOT prepared nor is it suitable for legal, engineering or surveying purposes.

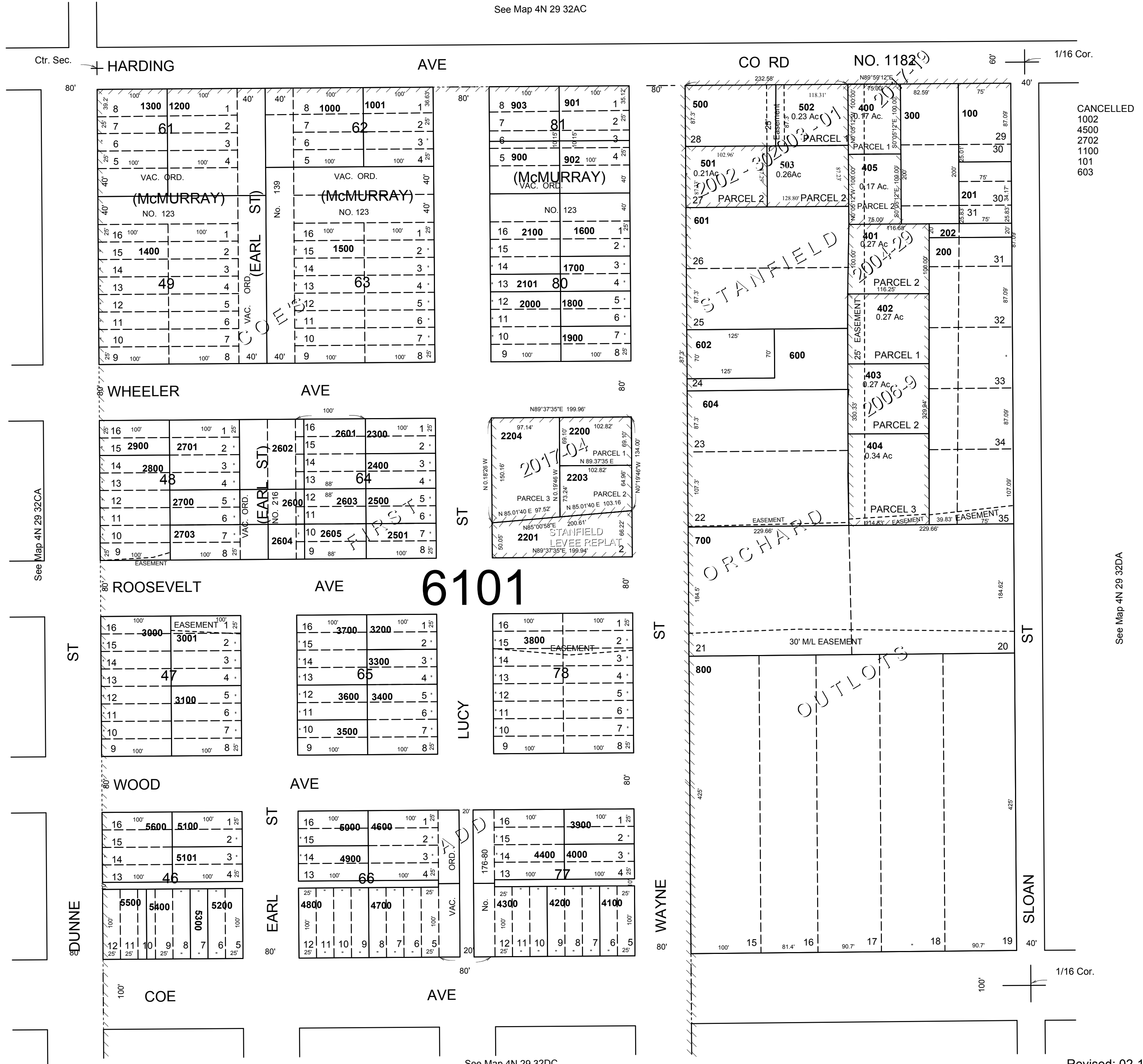


# NW 1/4 SE 1/4 SEC 32 T4N R29E WM UMATILLA COUNTY

4N2932DB  
AERIAL PHOTO NO NZ 2P-44

SCALE: 1" = 100'

See Map 4N 29 32AC



See Map 4N 29 32CA

See Map 4N 29 32DA

See Map 4N 29 32DC

Revised: 02-13-18

4N2932DB