

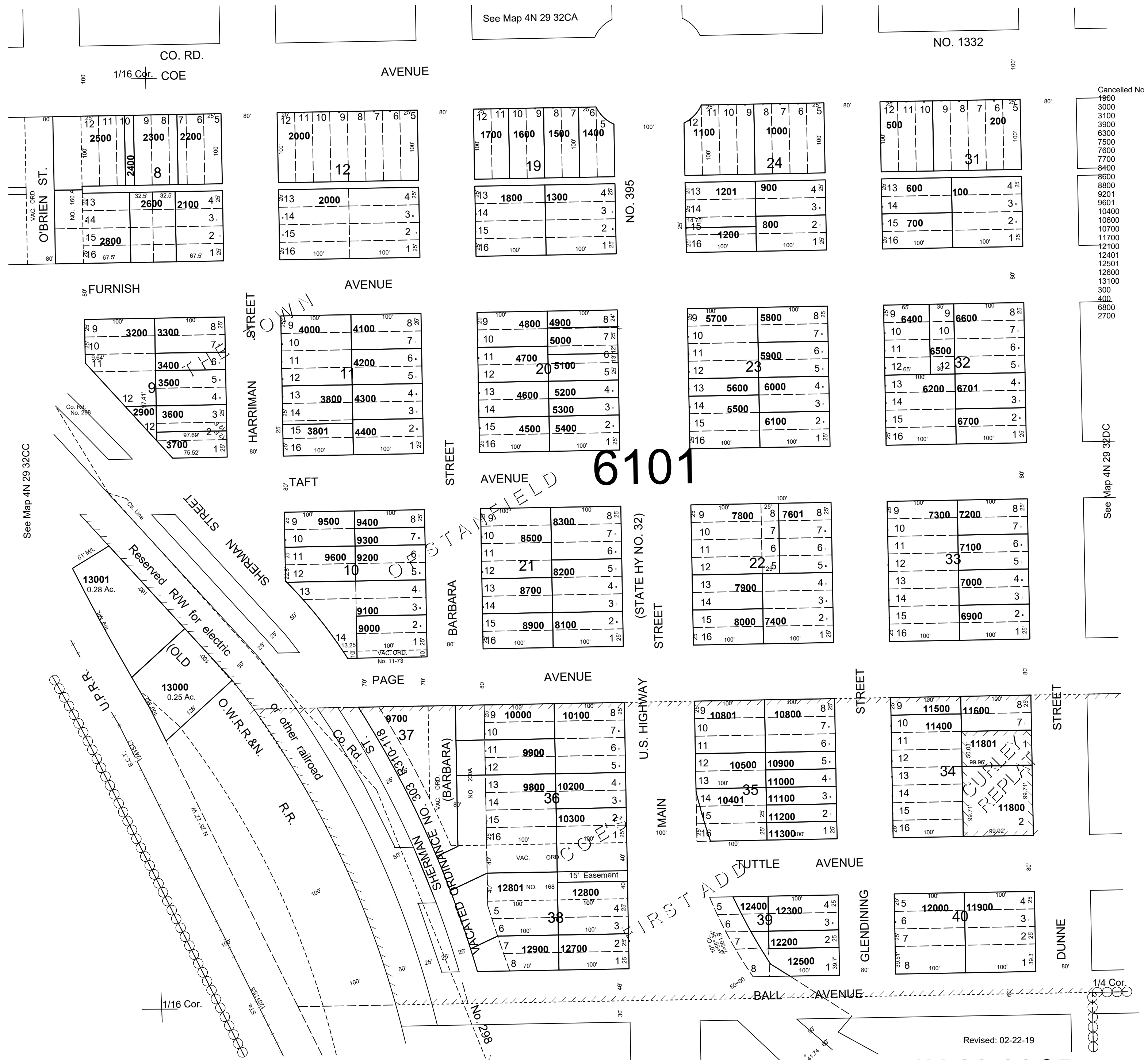
This map was prepared for Assessment & Taxation purposes only and was NOT prepared nor is it suitable for legal, engineering or surveying purposes.

SE1/4 SW1/4 SEC 32 T4N R29E WM UMATILLA COUNTY

4N 29 32CD

AERIAL PHOTO NO. 2P-46

SCALE 1"=100'



Revised: 02-22-19
4N 29 32CD