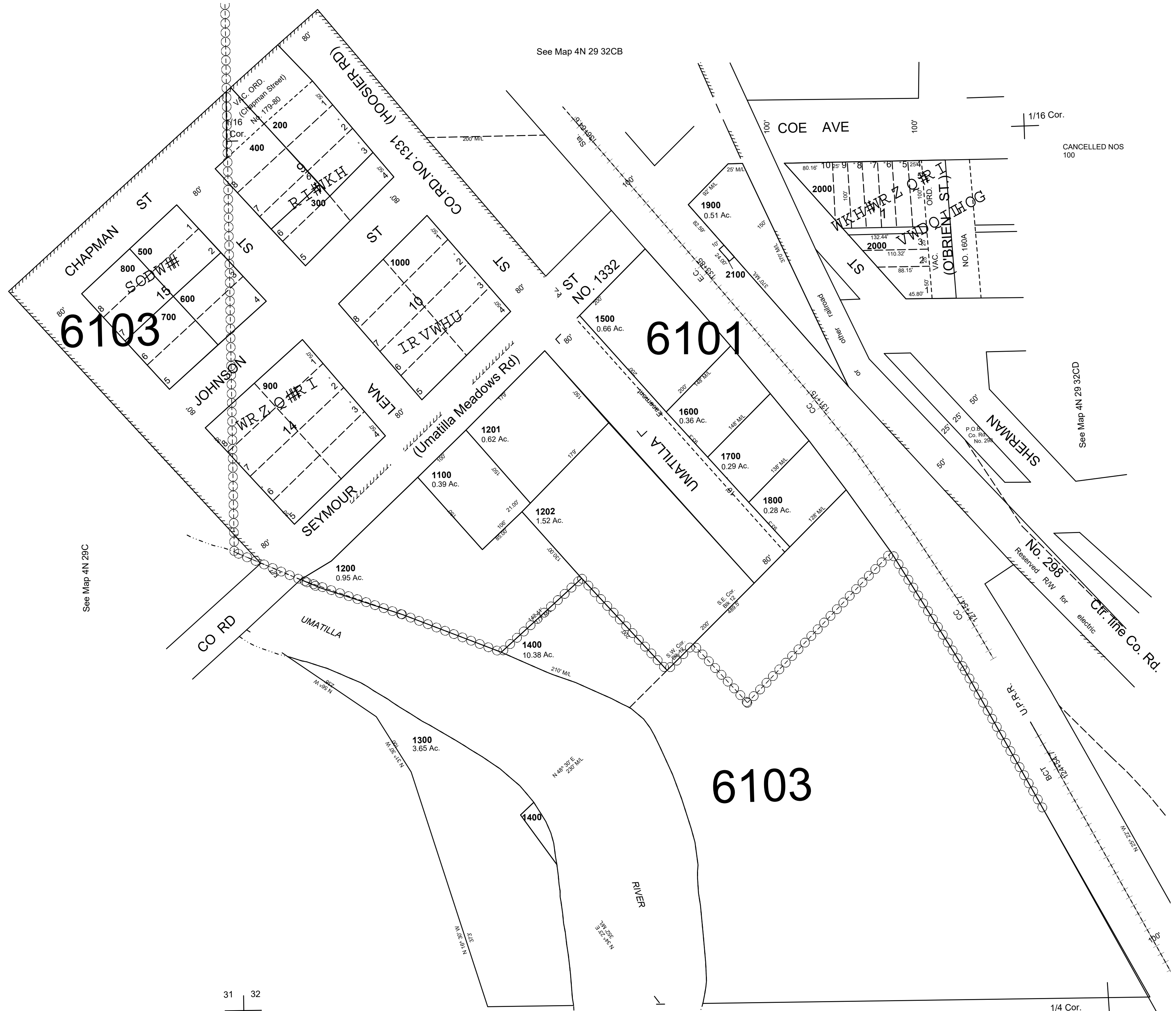


This map was prepared for Assessment & Taxation purposes only and was NOT prepared nor is it suitable for legal, engineering or surveying purposes.

SW1/4 SW1/4 SEC 32 T4N R32E WM
UMATILLA COUNTY

4N 29 32CC
AERIAL PHOTO NO. 2P 45 & 46

1"=100'



See Map 4N 29C

See Map 4N 29 32CB

CANCELLED NOS 100

See Map 4N 29 32CD

No. 298

CT. Life Co. Rd.

31 32

1/4 Cor.

Revised: 09-13-2021

4N 29 32CC