


This map was prepared for Assessment & Taxation purposes only and was NOT prepared nor is it suitable for legal, engineering or surveying purposes.

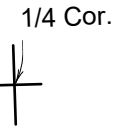
# NW1/4 SW1/4 SEC 32 T4N R29E WM UMATILLA COUNTY

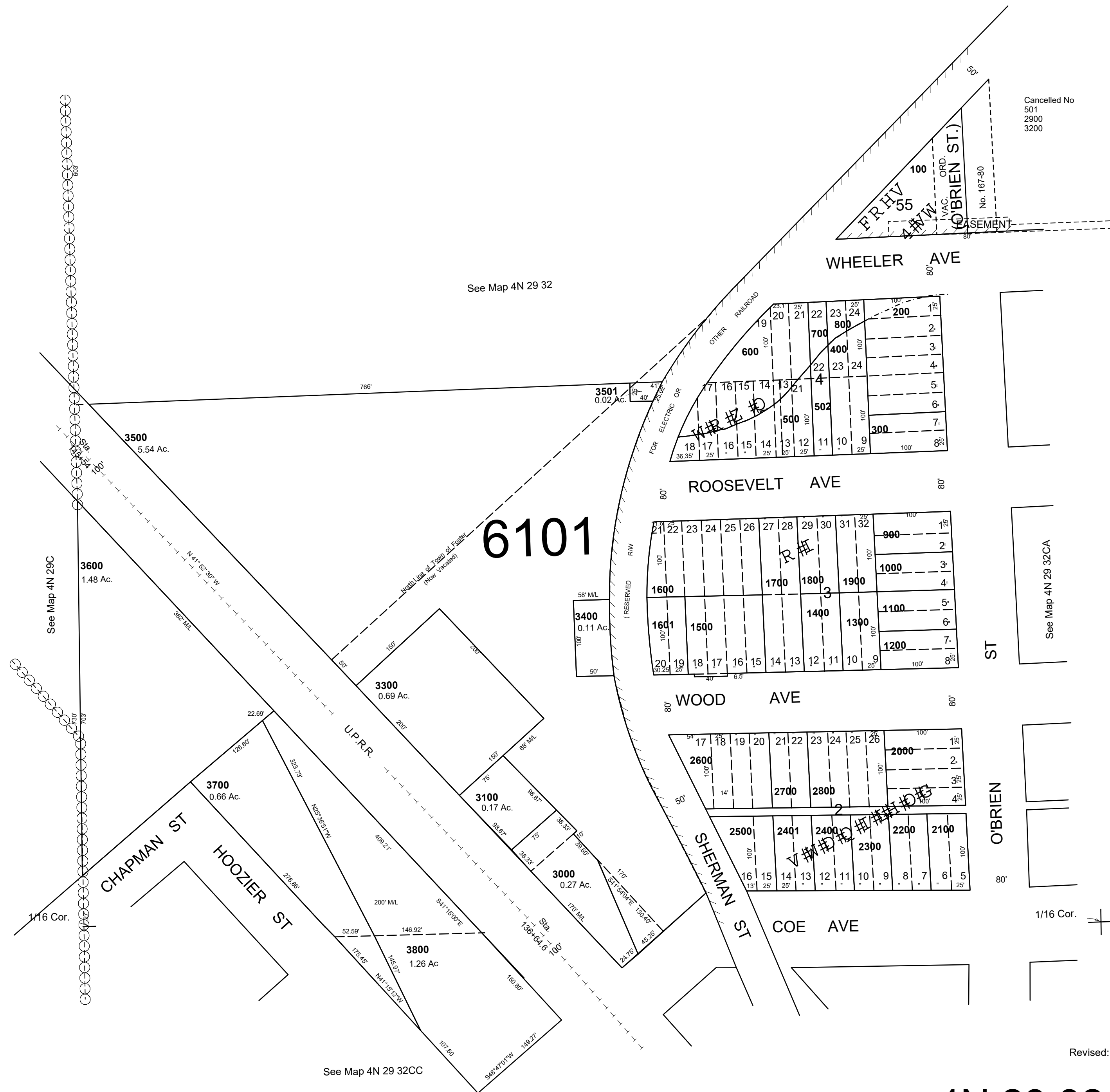
## 4N 29 32CB

AERIAL PHOTO NO. NZ 2P-45

1"=100'

1/16 Cor. 

1/4 Cor. 



## 4N 29 32CB