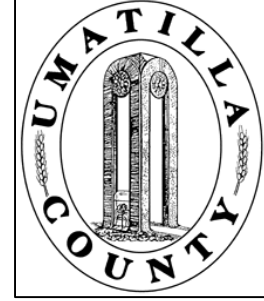


This map was prepared for Assessment & Taxation purposes only and was NOT prepared nor is it suitable for legal, engineering or surveying purposes.

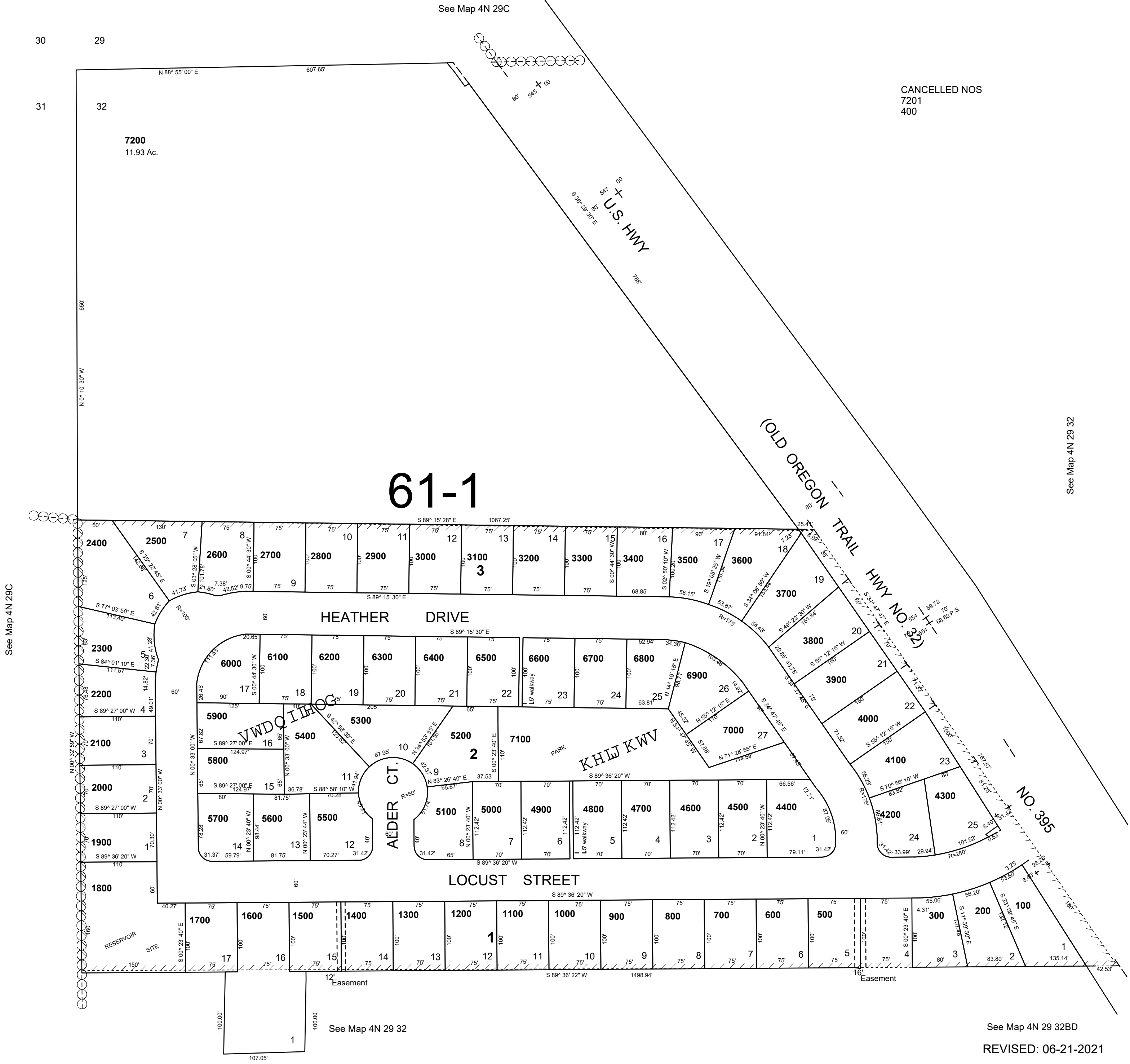


NW1/4 NW1/4 SEC 32 T4N R29E WM UMATILLA COUNTY

SCALE: 1" = 100'

4N 29 32BB

AERIAL PHOTO NO. 2P 45 & 46



CANCELLED NOS
7201
400

See Map 4N 29 32

See Map 4N 29 C

See Map 4N 29 32B

REVISED: 06-21-2021

4N 29 32BB