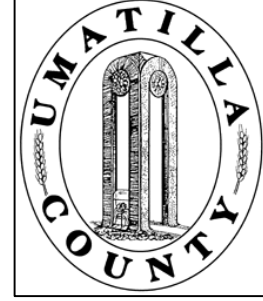


This map was prepared for Assessment & Taxation purposes only and was NOT prepared nor is it suitable for legal, engineering, or surveying purposes.

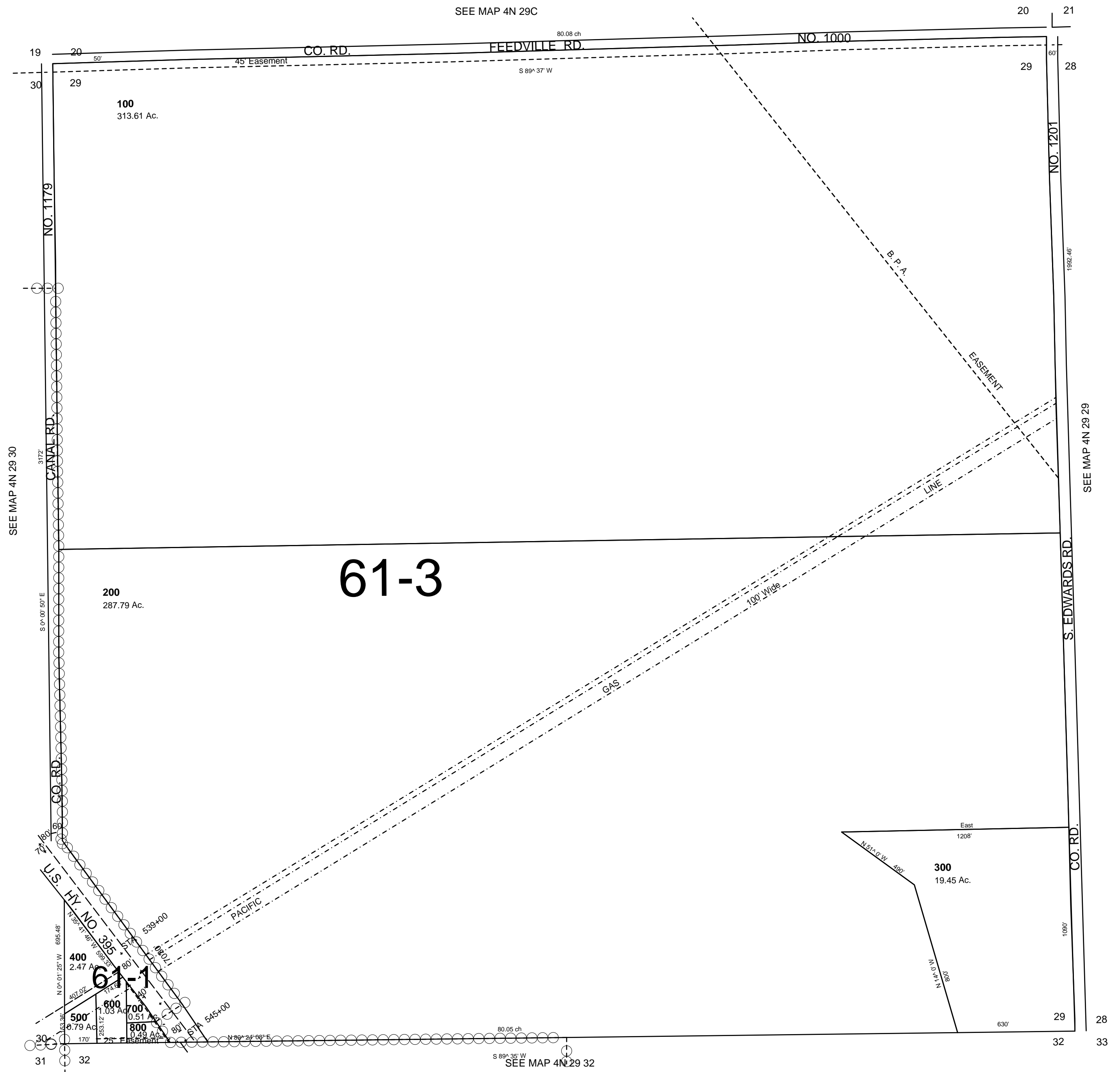


SEC 29 T4N R29E WM UMATILLA COUNTY, OR

SCALE: 1" = 400'

4N 29 29

AERIAL PHOTO NO NZ 2P 18-20 & 43-46



Revised: 7/22/09

4N 29 29