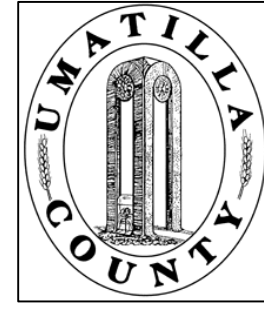


This map was prepared for Assessment & Taxation purposes only and was NOT prepared nor is it suitable for legal, engineering or surveying purposes.

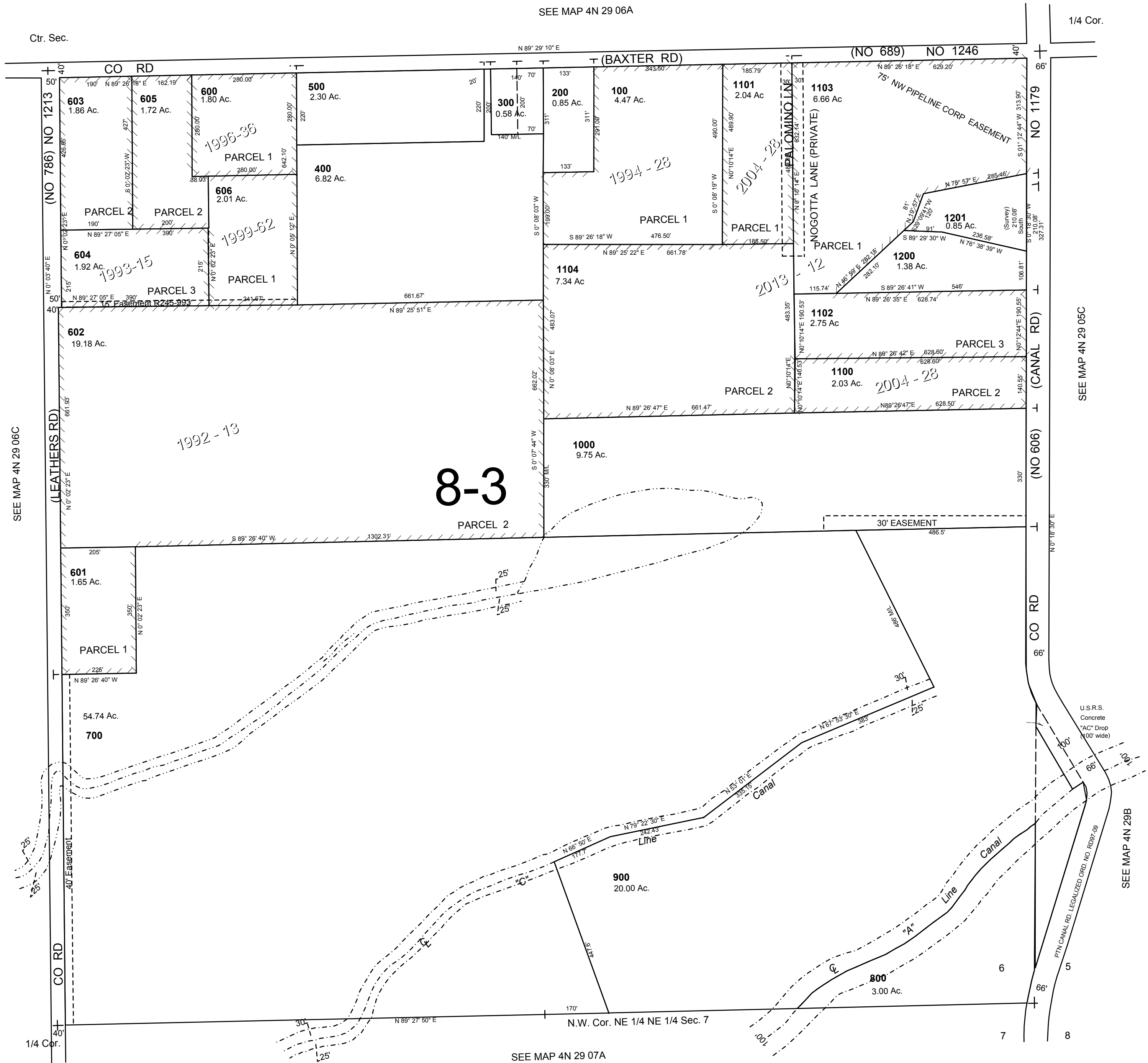


SE1/4 SEC 6 T4N R29E WM UMATILLA COUNTY

SCALE: 1" = 200

4N 29 06D

AERIAL PHOTO NO 1P 124 & 125



SEE MAP 4N 29 06C

SEE MAP 4N 29 05C

SEE MAP 4N 29B

SEE MAP 4N 29 07A

Revised: 05-08-18

4N 29 06D