

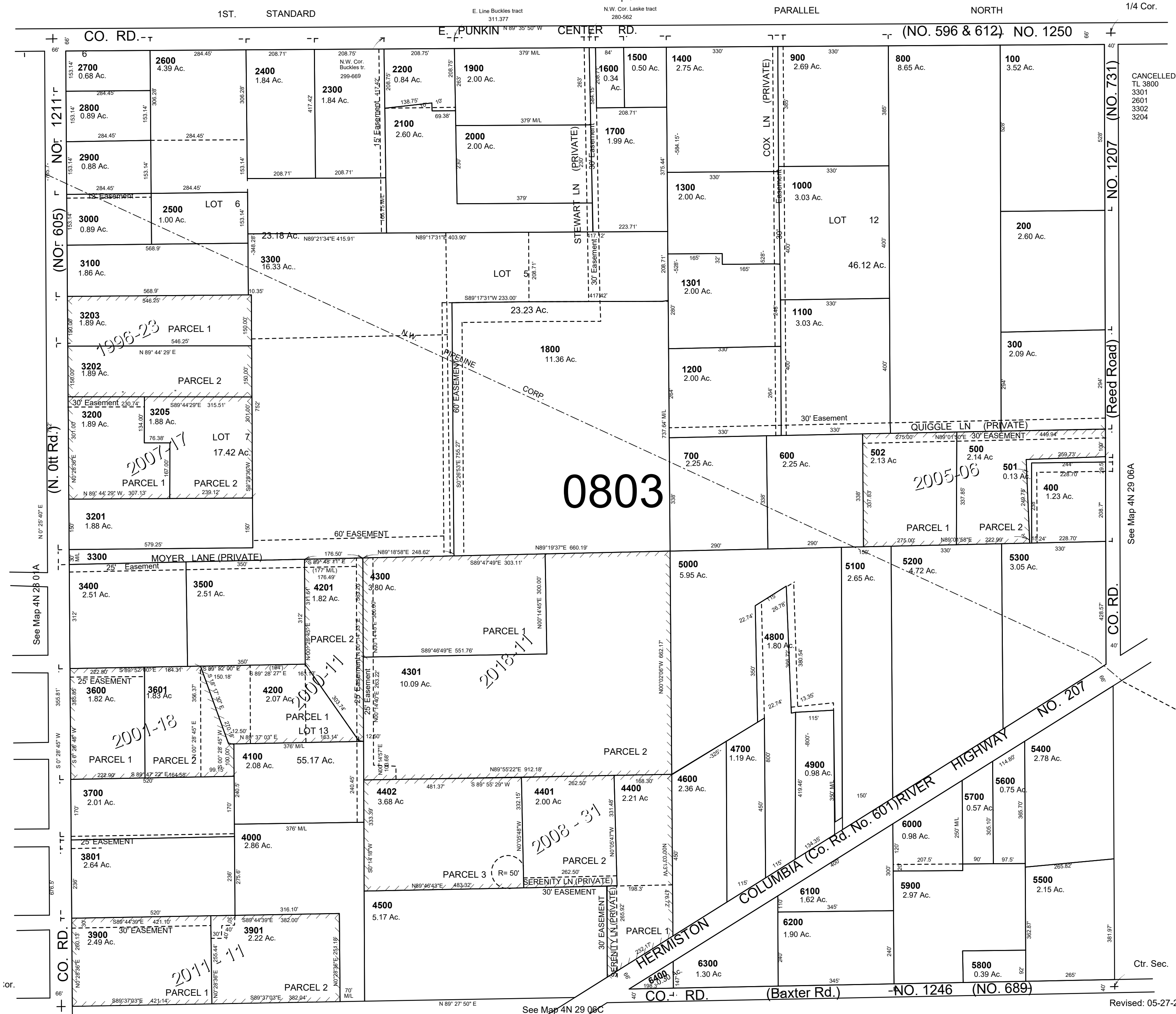
This map was prepared for Assessment & Taxation purposes only and was NOT prepared nor is it suitable for legal, engineering or surveying purposes.

NW 1/4 SEC 6 T4NR29E WM UMATILLA COUNTY SCALE 1"=200'

4N2906B

AERIAL PHOTO NO 1P 124 & 125

See Map 5N 29 31C



4N2906B