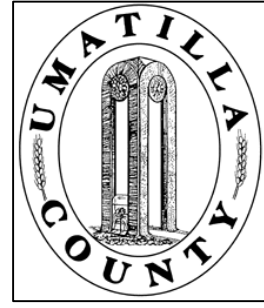


This map was prepared for Assessment & Taxation purposes only and was NOT prepared nor is it suitable for legal, engineering or surveying purposes.



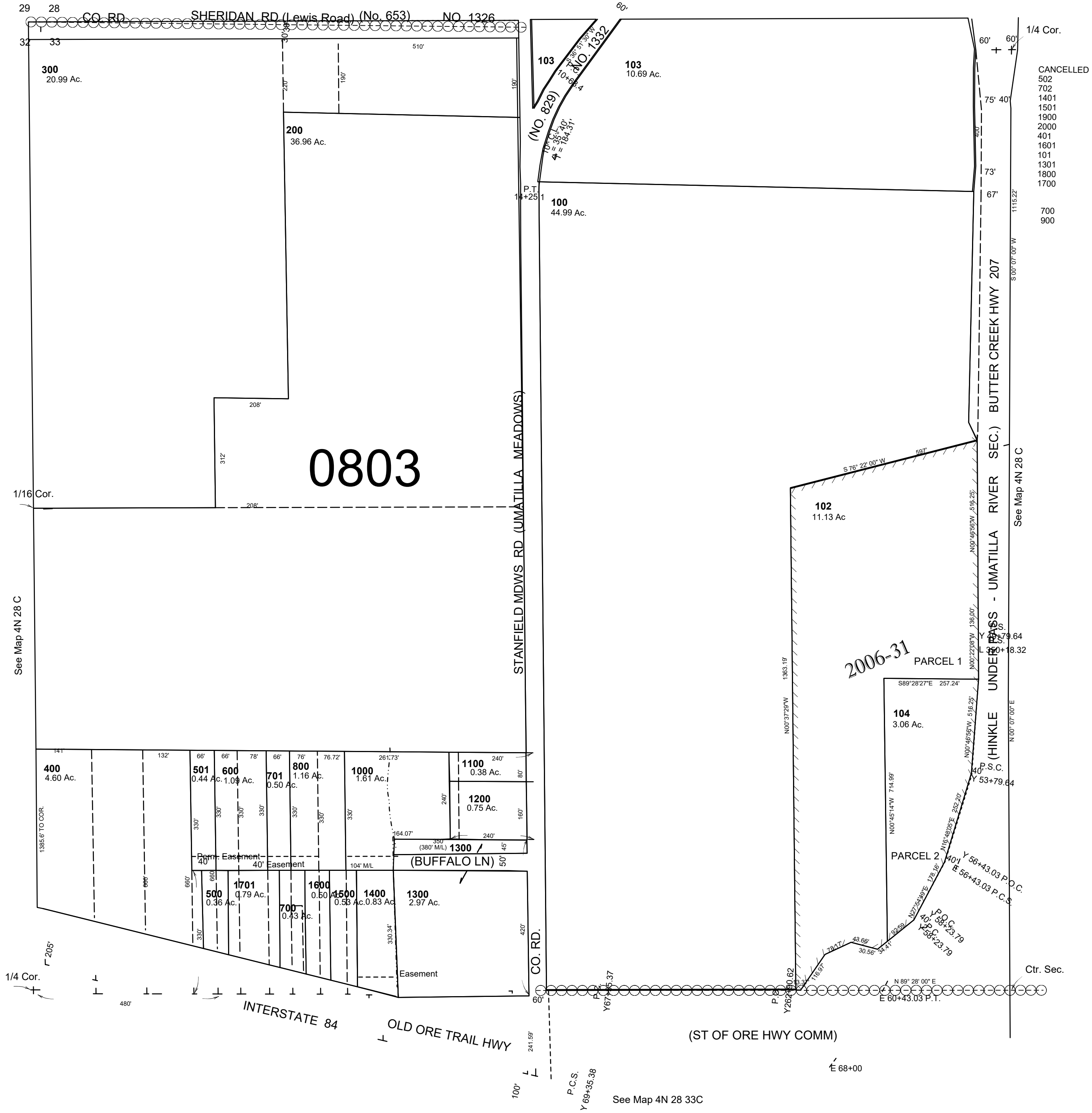
NW1/4 SEC 33 T 4N R 28E WM  
UMATILLA COUNTY, OR

SCALE: 1" = 200'

4N2833B

Aerial Photo No. NZ-2P-141

See Map 4N 28 C



- CANCELLED
- 502
  - 702
  - 1401
  - 1501
  - 1900
  - 2000
  - 401
  - 1601
  - 101
  - 1301
  - 1800
  - 1700
  - 700
  - 900

Revised: 09-09-2021

4N2833B