

This map was prepared for Assessment & Taxation purposes only and has not been prepared or is suitable for legal, engineering or surveying purposes

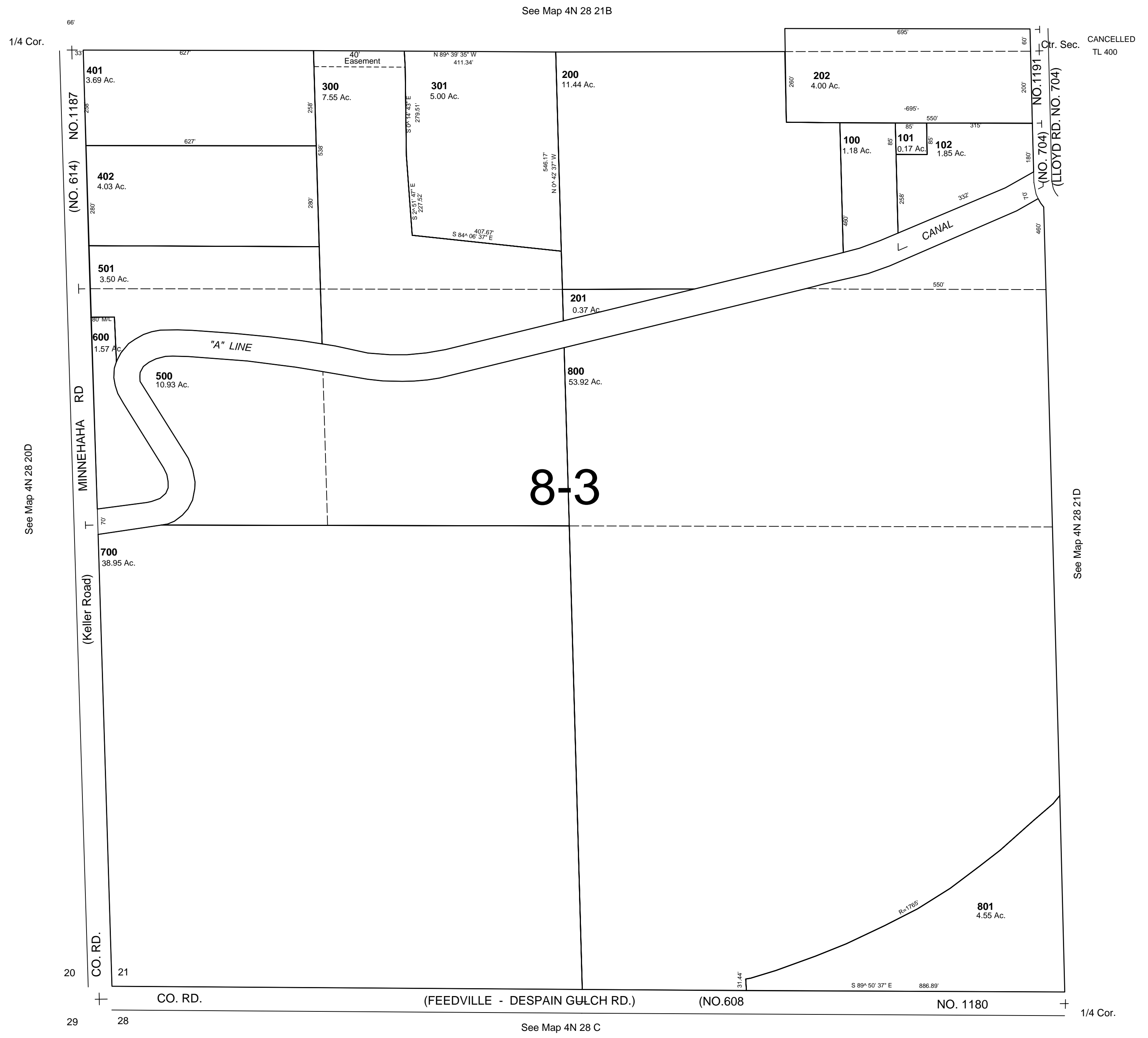
SW 1/4 SEC 21 T4N R28E WM UMATILLA COUNTY

SCALE 1"=200'

9/18/06

4N 28 21C

AERIAL PHOTO NO. 2P-24



4N 2821C