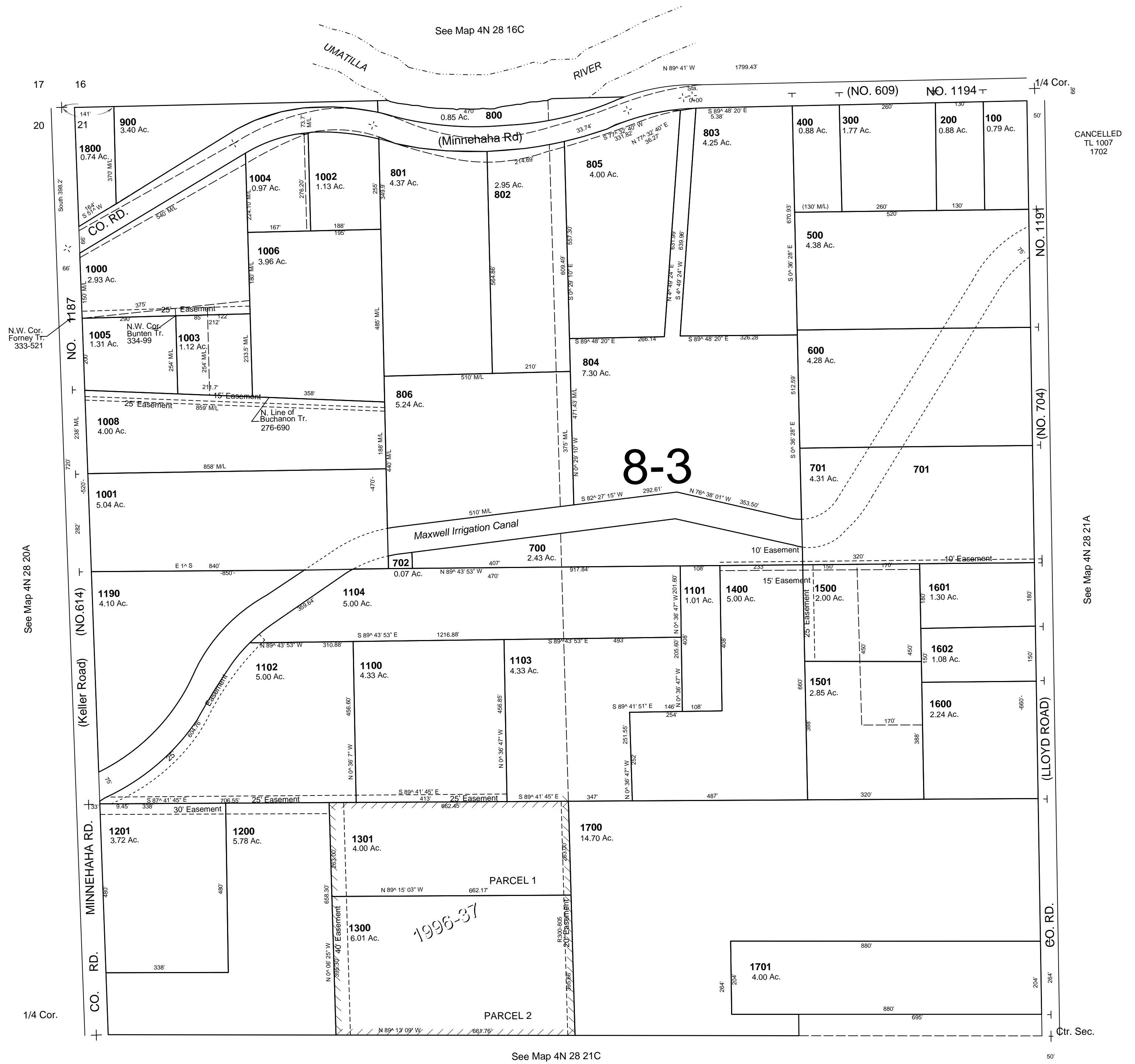


This map was prepared for Assessment & Taxation purposes only and was NOT prepared nor is it suitable for legal, engineering or surveying purposes.

NW1/4 SEC 21 T4N R28E WM UMATILLA COUNTY SCALE 1"=200'

4N 28 21B
AERIAL PHOTO NO. 2P-25



4N 28 21B