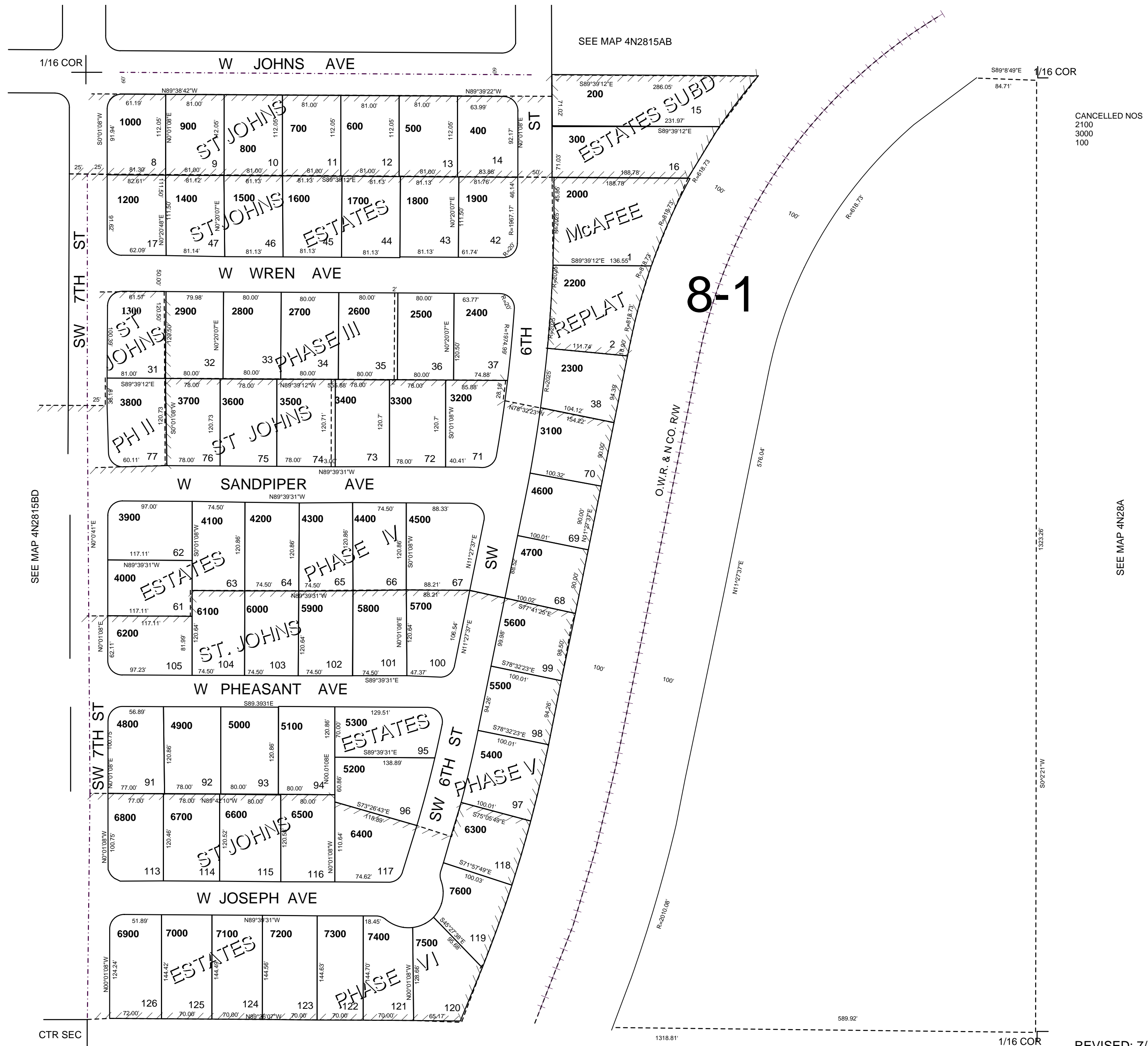


This map was prepared for Assessment & Taxation purposes only and was NOT prepared nor is it suitable for legal, engineering or surveying purposes.

SW1/4 NE14 SEC 15 T4NR28E WM UMATILLA COUNTY

SCALE 1"=100'

4N2815AC
AERIAL PHOTO NO 2P-23 & 1P-123



4N2815AC