

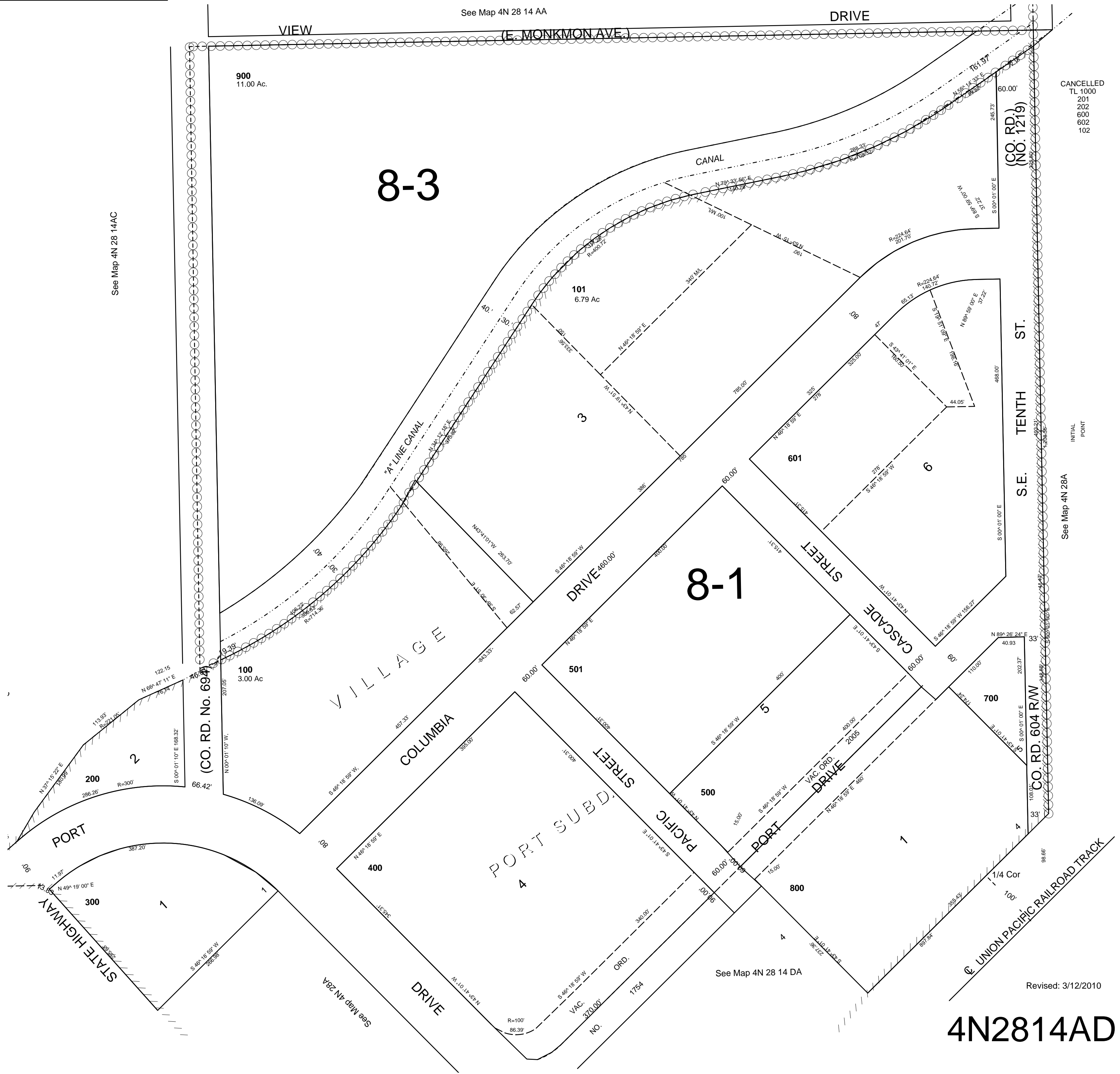
This map was prepared for Assessment & Taxation purposes only and was NOT prepared nor is it suitable for legal, engineering or surveying purposes.

# SE 1/4 NE 1/4 T4N R28E WM UMATILLA COUNTY

SCALE 1"=100'

## 4N 28 14AD

AERIAL PHOTO NO. 2P-22



CANCELLED  
TL 1000  
201  
202  
600  
602  
102

INITIAL  
POINT

See Map 4N 28A

Revised: 3/12/2010

# 4N2814AD