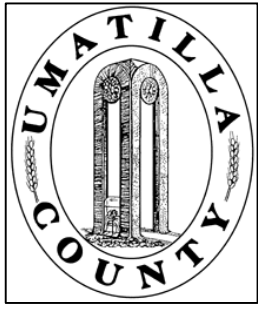


This map was prepared for Assessment & Taxation purposes only and was NOT prepared nor is it suitable for legal, engineering or surveying purposes.



# SE1/4 SE1/4 SEC 10T4N R28E WM UMATILLA COUNTY

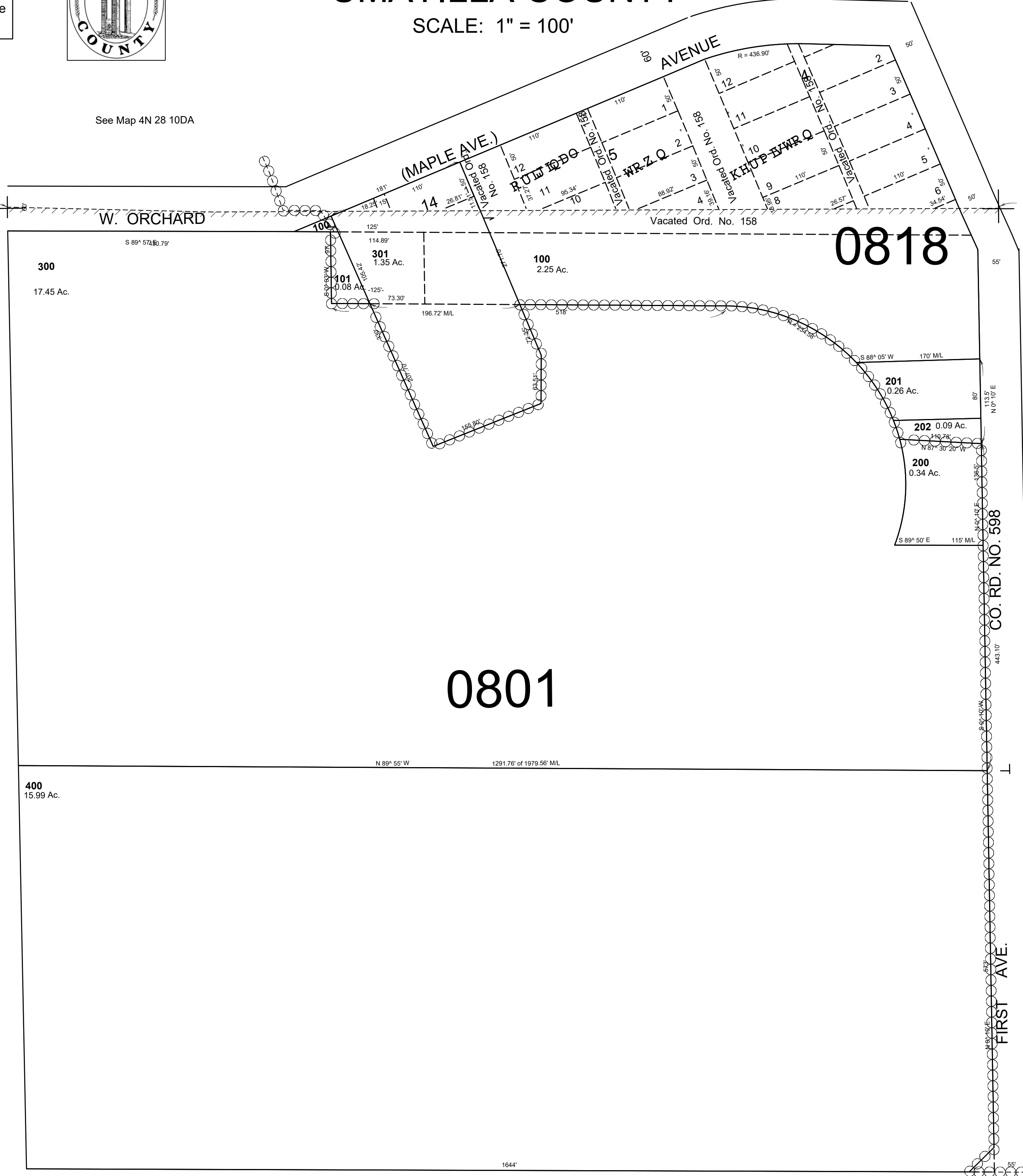
**4N2810DD**  
AERIAL PHOTO NO 1P-123

SCALE: 1" = 100'

See Map 4N 28 10DA

1/16 Cor.

1/16 Cor.



CANCELLED  
TL 102  
103

See Map 4N 28 10DC

See Map 4N 28 11CC

REVISED: 09-27-2021

1/16 Cor.

W. HIGHLAND

(Bridge Road)

AVENUE

FIRST AVE.

15 14

See Map 4N 28 15AA

**4N2810DD**