

THIS MAP WAS PREPARED FOR
ASSESSMENT PURPOSES ONLY

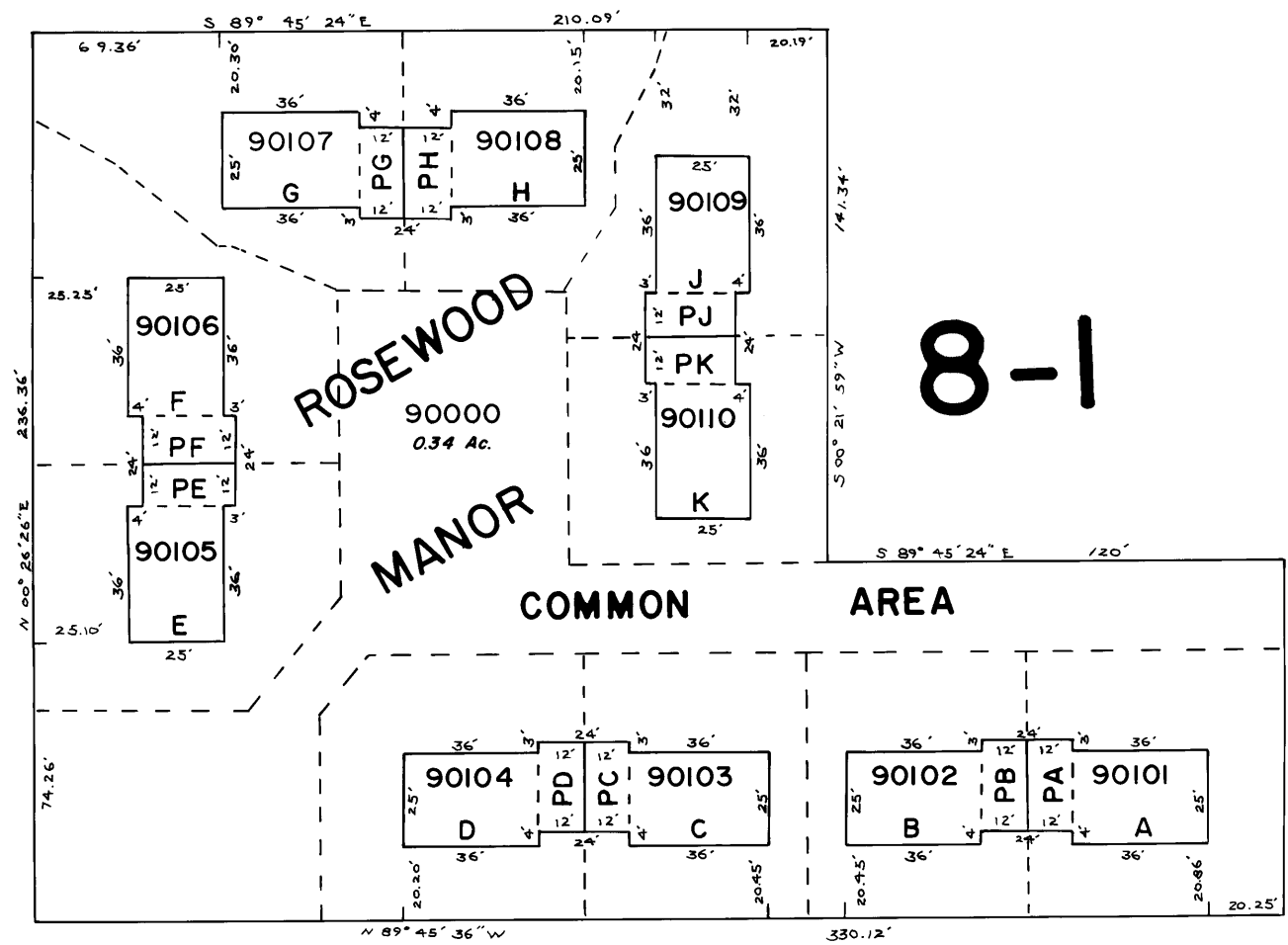
NW1/4 Sec. 10 T.4N. R.28E.W.M.
UMATILLA COUNTY

1" = 50'

4N 28 10B
Supplemental Map No. 1
ROSEWOOD MANOR

See Map 4N 28 10B

See Map 4N 28 10B



See Map 4N 28 10B

8-1

--- Dashed lines denotes boundary of "Limited Common Areas"

Limited Common Area Acreages

- A 0.08 Ac.
- B 0.07 Ac.
- C 0.07 Ac.
- D 0.08 Ac.
- E 0.07 Ac.
- F 0.10 Ac.
- G 0.09 Ac.
- H 0.06 Ac.
- J 0.08 Ac.
- K 0.07 Ac.

See Map 4N 28 10B

4N 28 10B
Supplemental Map No. 1